

# CERTIFICATE OF LOCATION OF GOVERNMENT CORNER

County of Anoka

State of Minnesota

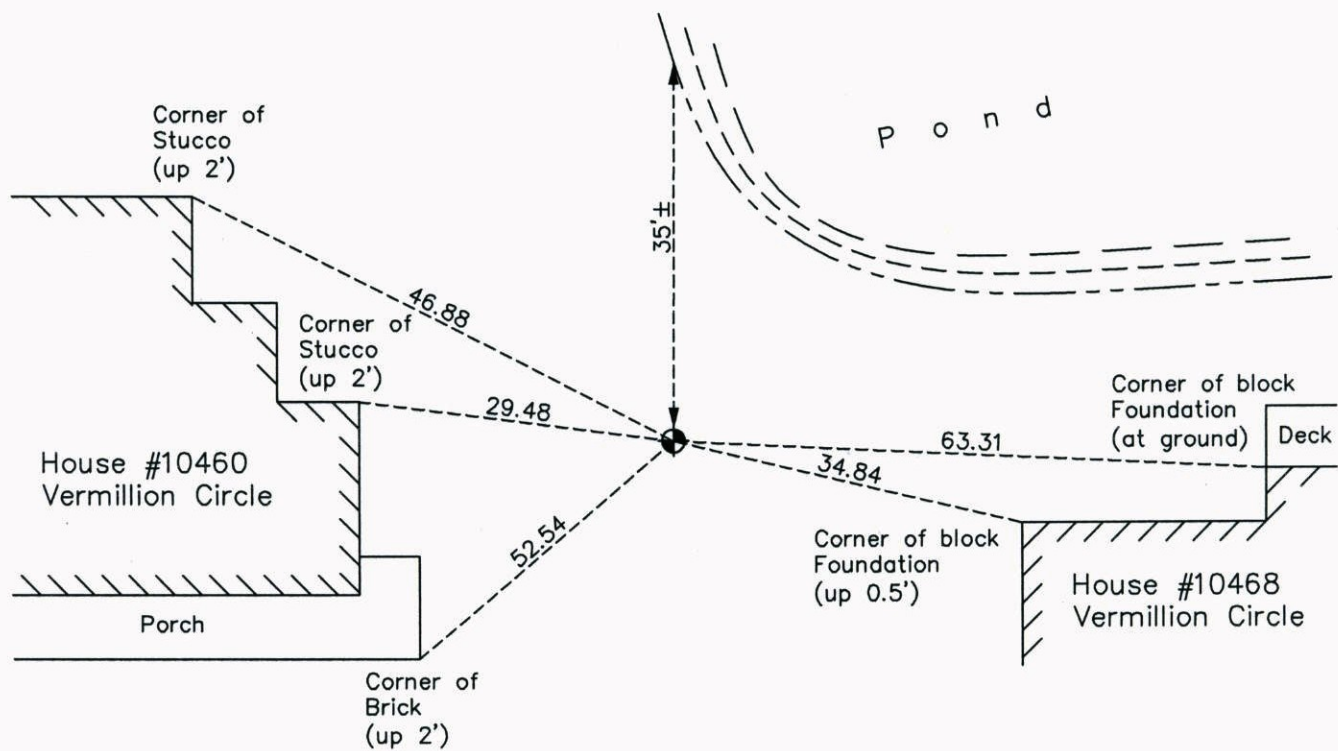
## West 1/4 Corner of Sec. 22 Township 31 Range 23

On the 17th day of April, 1973, the described corner was evidenced by a 1" axle shaft

and to perpetuate the location of said corner, at the exact location thereof, a permanent marker was placed consisting of a cast iron monument

AND on the 10th day of June, 2014, said permanent marker was found down 1'± and the ties were updated. Sign and post were found missing.

Updated reference ties are as shown below.



Revision Date  
2/18/15

N.A.D. 1983 Coordinates  
(1996 Adjustment)

County Project Coordinates	
Northing	<u>145780.6585</u>
Easting	<u>516090.1562</u>
Date	<u>10/27/98</u>

I hereby certify that this United States public land survey monument record is correct and complete to the best of my knowledge and belief.

*Larry D. Hoium*      Date 2/18/15

Larry D. Hoium, Anoka County Surveyor

Minnesota License Number 18165