

CERTIFICATE OF LOCATION OF GOVERNMENT CORNER

County of Anoka

State of Minnesota

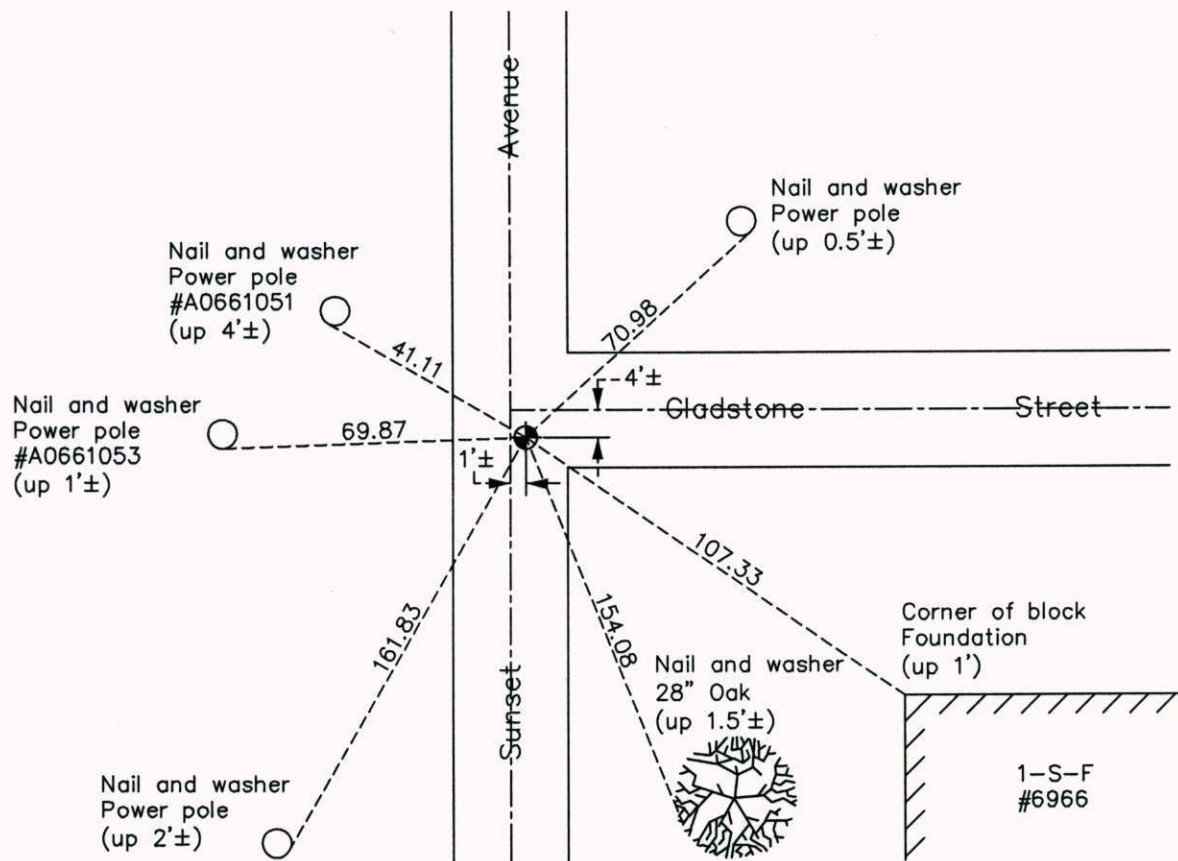
East 1/4 Corner of Sec. 24 Township 31 Range 23

On the 18th day of September, 1959, the described corner was evidenced by a bent iron pipe

and to perpetuate the location of said corner, at the exact location thereof, a permanent marker was placed consisting of a cast iron monument

AND on the 28th day of May, 2014, said permanent marker was found broken. Replaced with a new cast iron monument and updated ties on July 8, 2014.

Updated reference ties are as shown below.



Revision Date
10/01/14

N.A.D. 1983 Coordinates
(1996 Adjustment)

County Project Coordinates	
Northing	<u>145572.8399</u>
Easting	<u>531938.2376</u>
Date	<u>6/11/98</u>

I hereby certify that this United States public land survey monument record is correct and complete to the best of my knowledge and belief.

Larry D. Hoium Date 10/01/14

Larry D. Hoium, Anoka County Surveyor

Minnesota License Number 18165