

CERTIFICATE OF LOCATION OF GOVERNMENT CORNER

County of Anoka

State of Minnesota

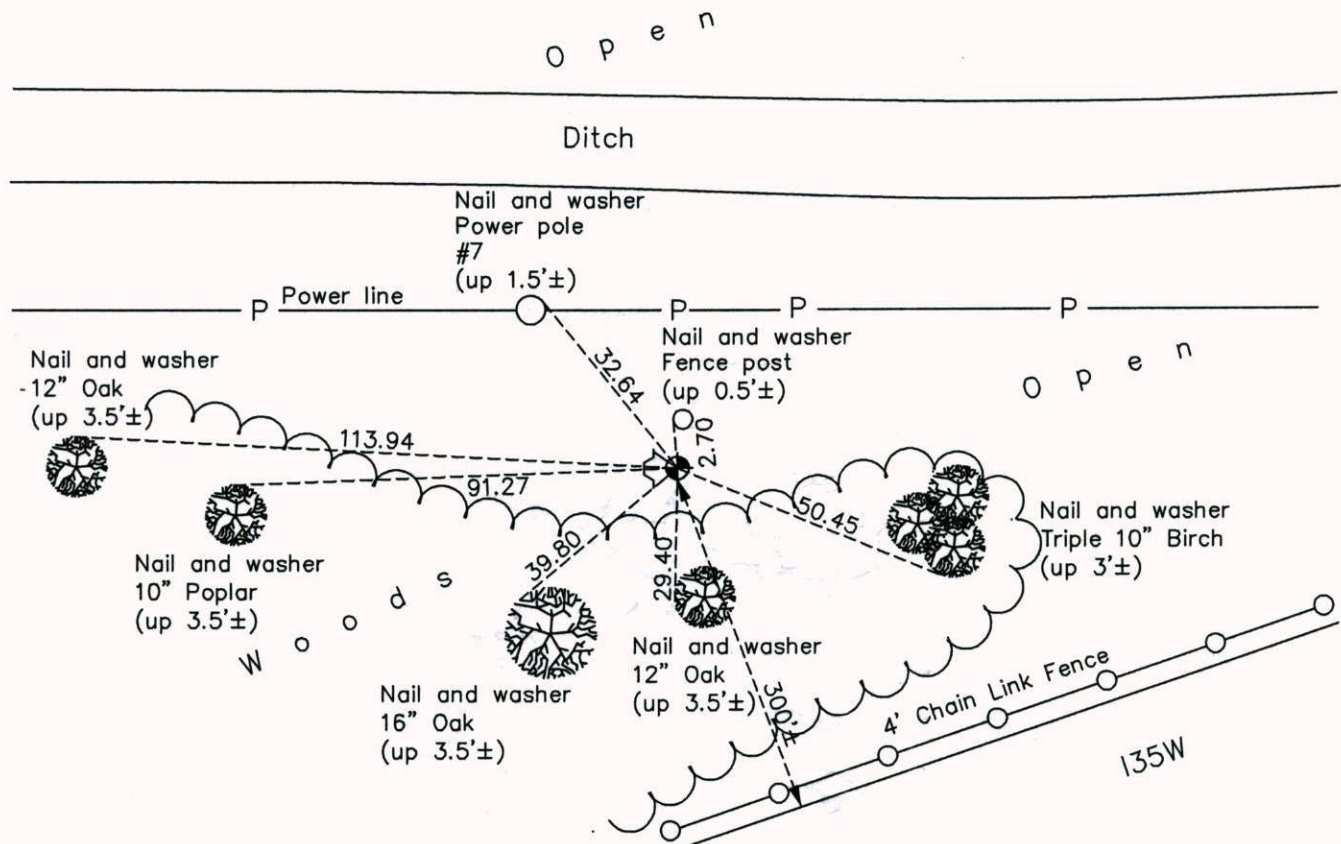
North 1/4 Corner of Sec. 26 Township 31 Range 23

On the 7th day of November, 1961, the described corner was evidenced by a concrete monument

and to perpetuate the location of said corner, at the exact location thereof, a permanent marker was placed consisting of a cast iron monument with a sign and post on the west side

AND on the 25th day of June, 2014, said permanent marker was found and the ties were updated

Updated reference ties are as shown below.



Revision Date
2/20/15

N.A.D. 1983 Coordinates
(1996 Adjustment)

County Project Coordinates	
Northing	143024.5572
Easting	523965.7476
Date	2/04/00

I hereby certify that this United States public land survey monument record is correct and complete to the best of my knowledge and belief.

Larry D. Hoium Date 2/20/15

Larry D. Hoium, Anoka County Surveyor

Minnesota License Number 18165