

CERTIFICATE OF LOCATION OF GOVERNMENT CORNER

County of Anoka

State of Minnesota

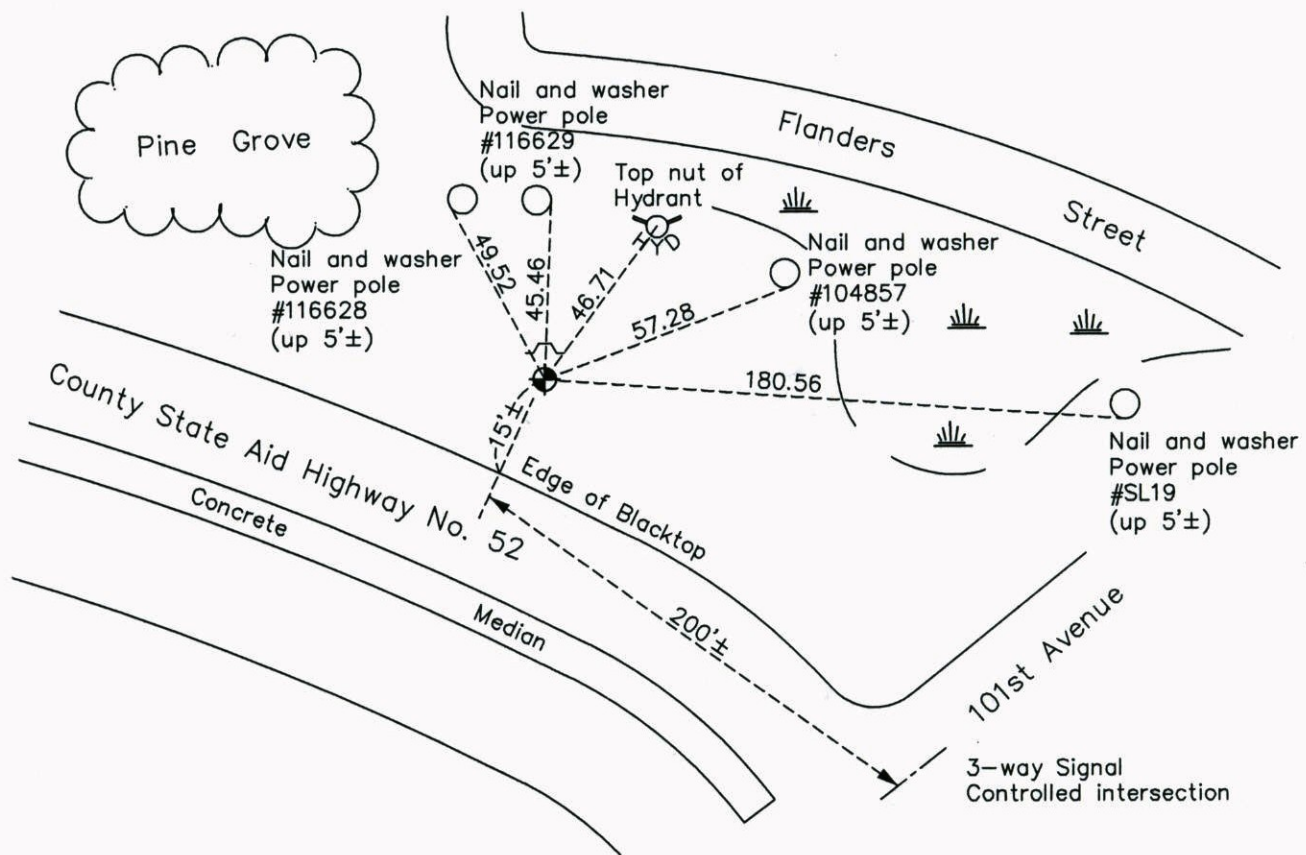
North 1/4 Corner of Sec. 27 Township 31 Range 23

On the 24th day of July, 1968, the described corner was evidenced by a granite monument

and to perpetuate the location of said corner, at the exact location thereof, a permanent marker was placed consisting of a cast iron monument with a sign and post on the north side

AND on the 16th day of June, 2014, said permanent marker was found down 0.5'± and the ties were updated

Updated reference ties are as shown below.



Revision Date

2/20/15

N.A.D. 1983 Coordinates
(1996 Adjustment)

County Project Coordinates

Northing	143083.0197
Easting	518694.8375
Date	10/27/98

I hereby certify that this United States public land survey monument record is correct and complete to the best of my knowledge and belief.

Larry D. Hoium Date 2/20/15

Larry D. Hoium, Anoka County Surveyor

Minnesota License Number 18165