

# CERTIFICATE OF LOCATION OF GOVERNMENT CORNER

County of Anoka

State of Minnesota

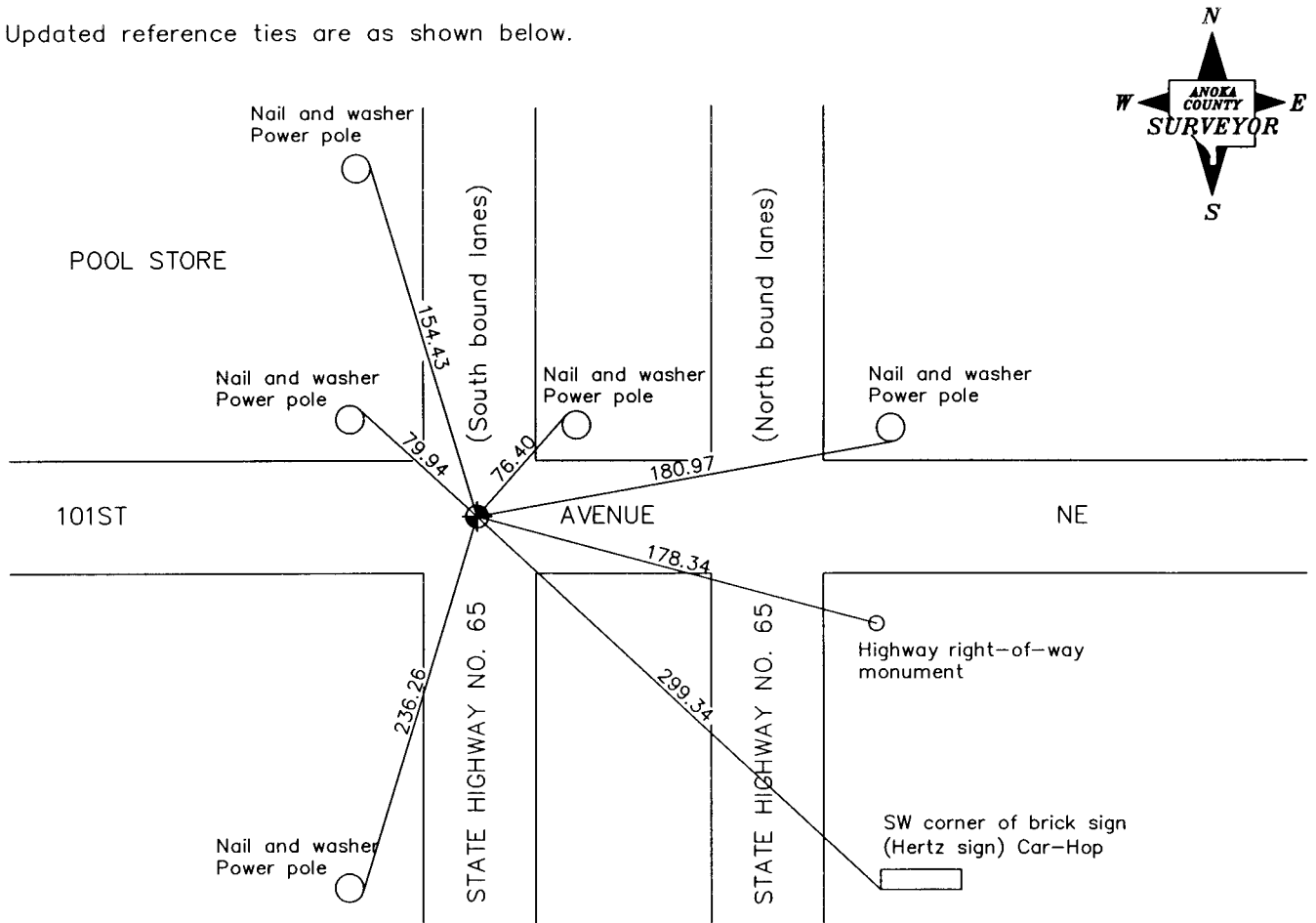
South 1/4 Corner of Sec. 20 Township 31 Range 23

On the \_\_\_ day of August, 1959, the described corner was evidenced by a P.K. nail

and to perpetuate the location of said corner, at the exact location thereof, a permanent marker was placed consisting of a cast iron monument

AND on the 31st day of August, 2006, said permanent marker was replaced with a 1/2" iron pipe using transit ties

Updated reference ties are as shown below.



Revised date
7/11/90
10/24/90
7/18/95
Reset 8/31/06

N.A.D. 1983 Coordinates (1996 Adjustment)	
County Project Coordinates	
Northing	<u>143119.6457</u>
Easting	<u>508070.9582</u>
Date	<u>8/31/06</u>

I hereby certify that this United States public land survey monument record is correct and complete to the best of my knowledge and belief.

*Larry D. Hoium* Date 6/28/07

Larry D. Hoium, Anoka County Surveyor

Minnesota License Number 18165