

# CERTIFICATE OF LOCATION OF GOVERNMENT CORNER

County of Anoka

State of Minnesota

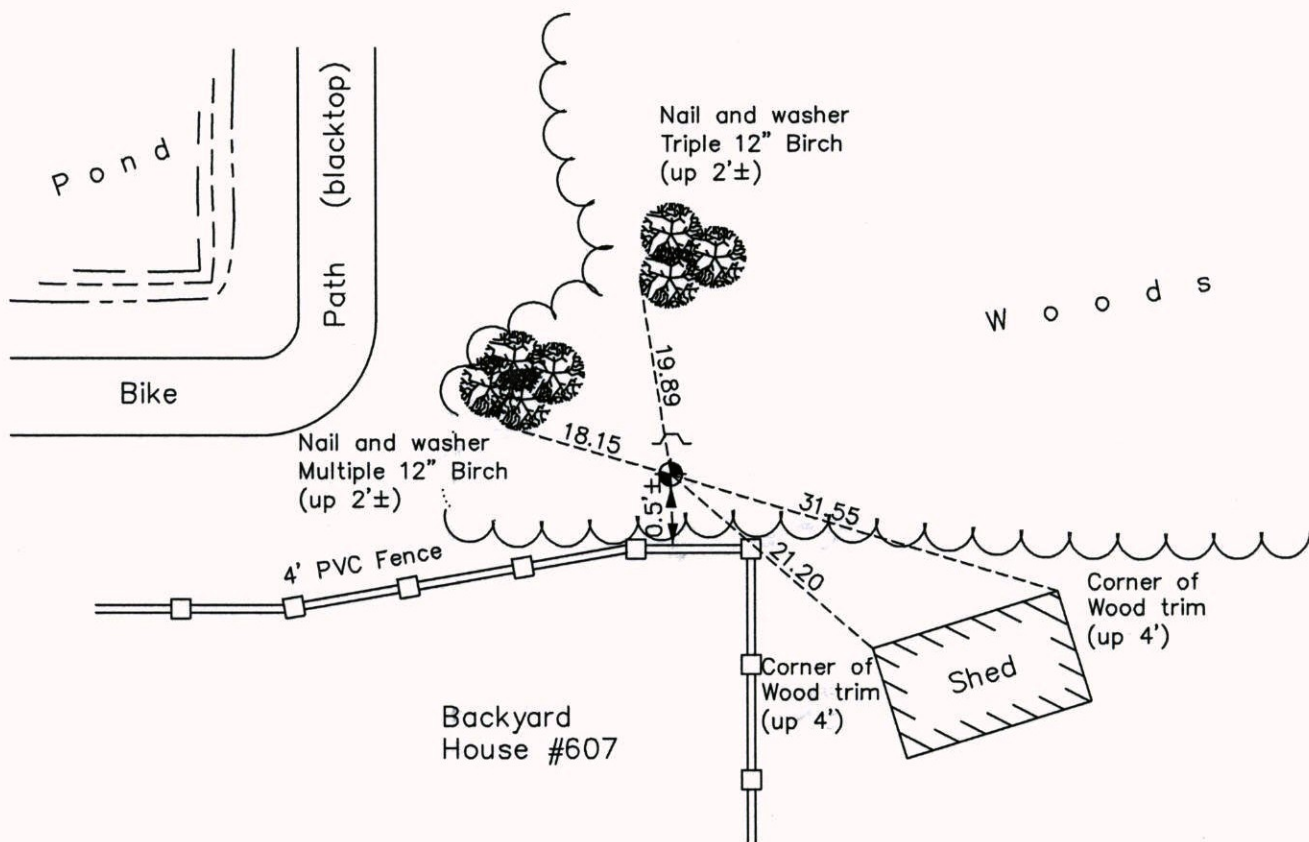
## South 1/4 Corner of Sec. 19 Township 31 Range 23

On the 23rd day of September, 1971, the described corner was evidenced by area resurvey

and to perpetuate the location of said corner, at the exact location thereof, a permanent marker was placed consisting of a cast iron monument with a sign and post on the north side

AND on the 9th day of June, 2014, said permanent marker was found and the ties  
were updated

Updated reference ties are as shown below.



Revision Date  
2/23/15

N.A.D. 1983 Coordinates  
(1996 Adjustment)

County Project Coordinates	
Northing	143139.5739
Easting	502760.4697
Date	12/10/98

I hereby certify that this United States public land survey monument record is correct and complete to the best of my knowledge and belief.

*Larry D. Hoium* Date 2/23/15

Larry D. Hoium, Anoka County Surveyor

Minnesota License Number 18165