

CERTIFICATE OF LOCATION OF GOVERNMENT CORNER

County of Anoka

State of Minnesota

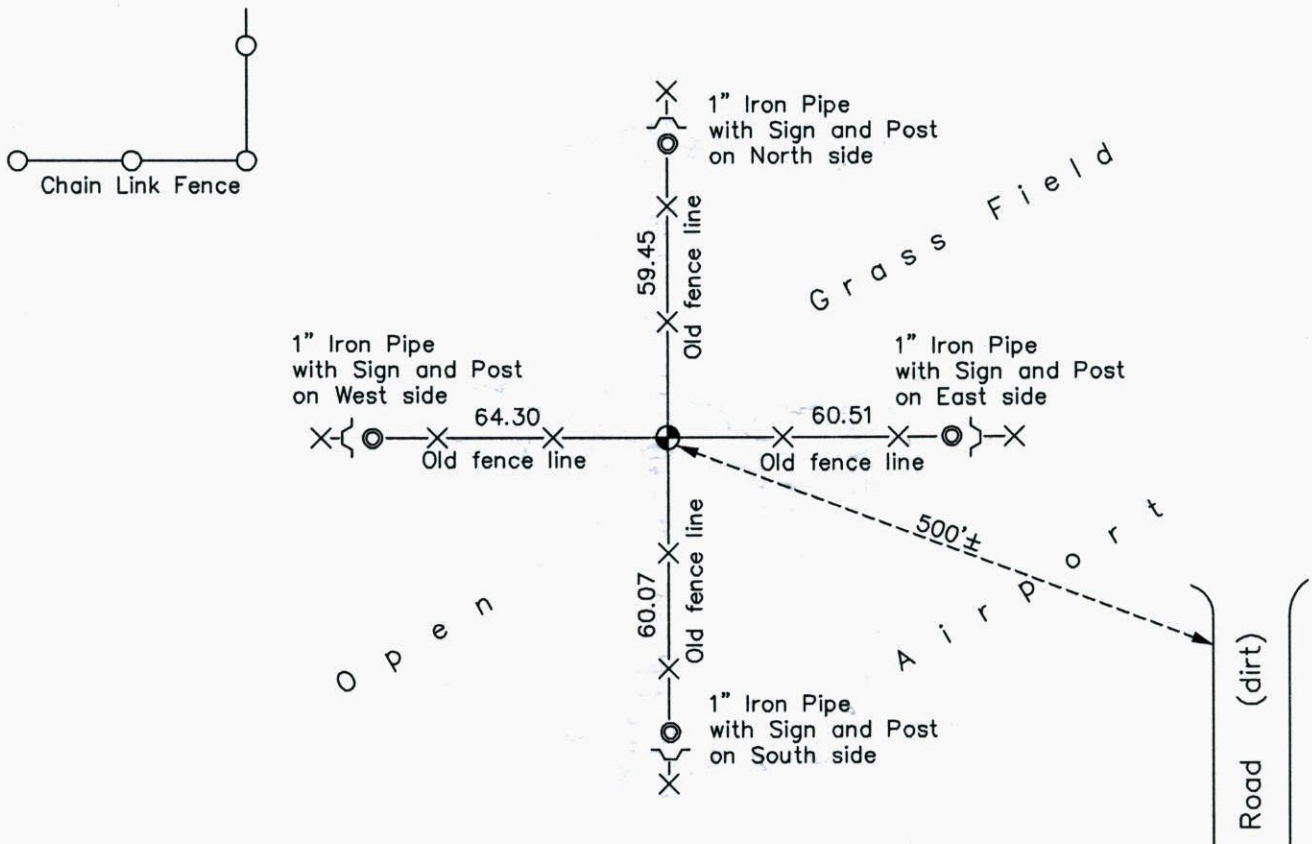
East 1/4 Corner of Sec. 29 Township 31 Range 23

On the 21st day of July, 1948, the described corner was evidenced by a concrete monument

and to perpetuate the location of said corner, at the exact location thereof, a permanent marker was placed consisting of a cast iron monument

AND on the 21st day of July, 2014, said permanent marker was found and the ties were updated

Updated reference ties are as shown below.



Revision Date
2/23/15

N.A.D. 1983 Coordinates
(1996 Adjustment)

County Project Coordinates	
Northing	<u>140456.7176</u>
Easting	<u>510707.7997</u>
Date	<u>8/26/99</u>

I hereby certify that this United States public land survey monument record is correct and complete to the best of my knowledge and belief.

Larry D. Hoium Date 2/23/15

Larry D. Hoium, Anoka County Surveyor

Minnesota License Number 18165