

CERTIFICATE OF LOCATION OF GOVERNMENT CORNER

County of Anoka

State of Minnesota

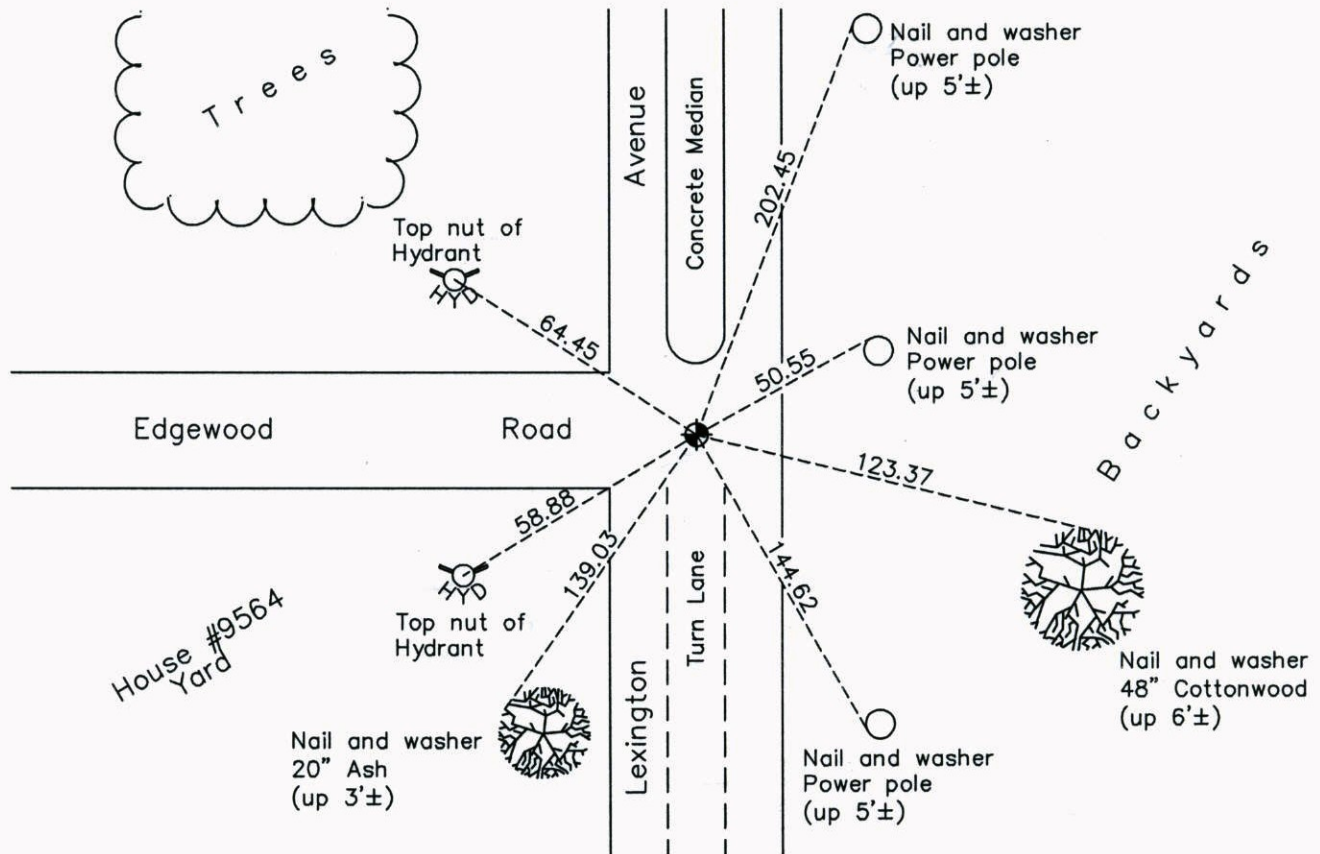
West 1/4 Corner of Sec. 25 Township 31 Range 23

On the 28th day of September, 1971, the described corner was evidenced by a concrete monument

and to perpetuate the location of said corner, at the exact location thereof, a permanent marker was placed consisting of a cast iron monument

AND on the 26th day of June, 2014, said permanent marker was found and the ties were updated

Updated reference ties are as shown below.



Revision Date
2/24/15

N.A.D. 1983 Coordinates
(1996 Adjustment)

County Project Coordinates	
Northing	140384.6756
Easting	526609.8560
Date	10/19/98

I hereby certify that this United States public land survey monument record is correct and complete to the best of my knowledge and belief.

Larry D. Hoium Date 2/24/15

Larry D. Hoium, Anoka County Surveyor

Minnesota License Number 18165