

CERTIFICATE OF LOCATION OF GOVERNMENT CORNER

County of Anoka

State of Minnesota

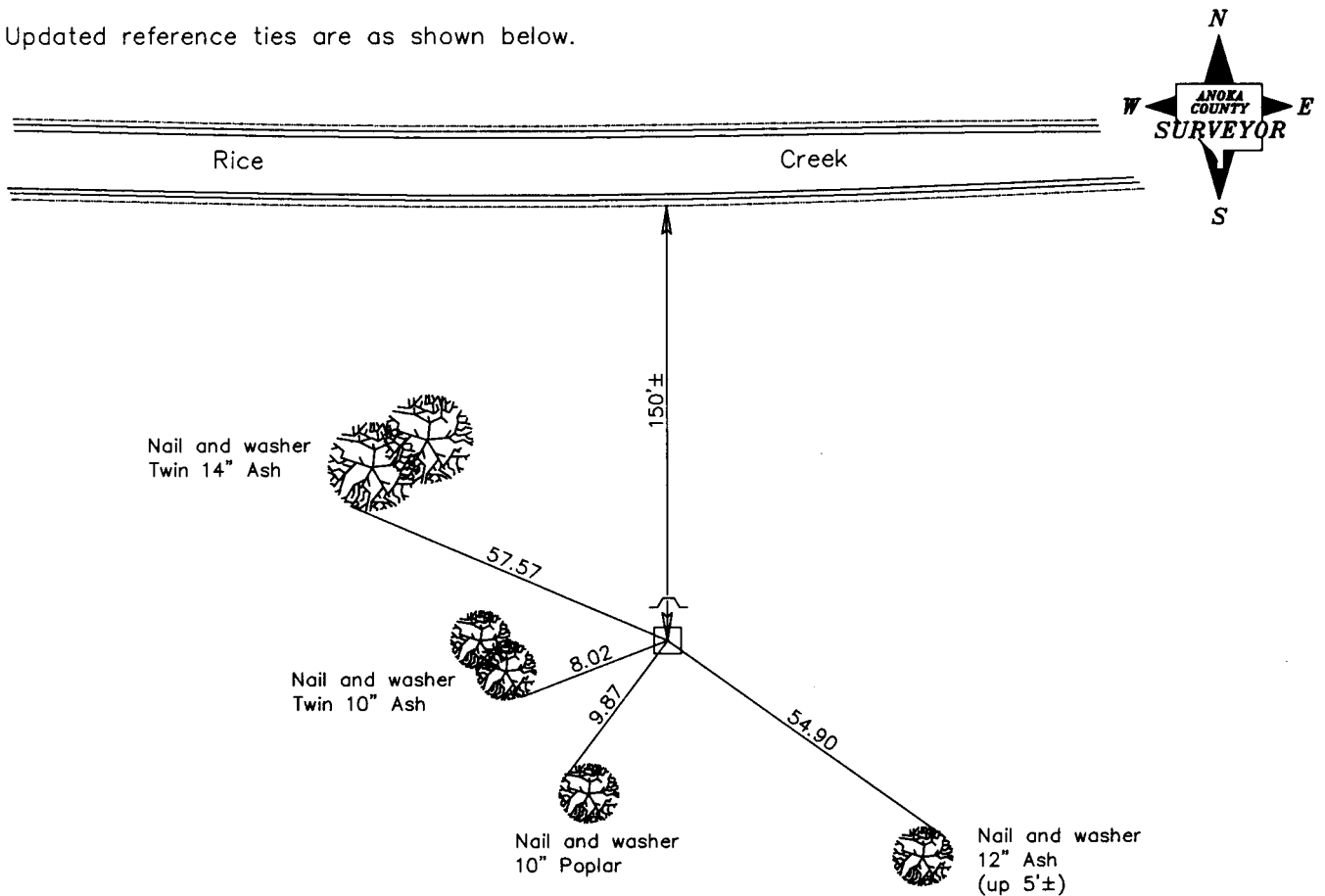
Northeast Corner of Sec. 36 Township 31 Range 23

On the 7th day of May, 1963, the described corner was evidenced by a 4" square concrete monument

and to perpetuate the location of said corner, at the exact location thereof, a permanent marker was placed consisting of the same concrete monument with a sign and post on the north side

AND on the 9th day of February, 2000, said permanent marker was found and the ties were updated

Updated reference ties are as shown below.



Revised date

1986
8/03/95
2/09/00

N.A.D. 1983 Coordinates
(1996 Adjustment)

County Project Coordinates
Northing <u>137637.7725</u>
Easting <u>531875.2941</u>
Date <u>2/09/00</u>

I hereby certify that this United States public land survey monument record is correct and complete to the best of my knowledge and belief.

Larry D. Hoium Date 2/09/00
Larry D. Hoium, Anoka County Surveyor

Minnesota License Number 18165