

CERTIFICATE OF LOCATION OF GOVERNMENT CORNER

County of Anoka

State of Minnesota

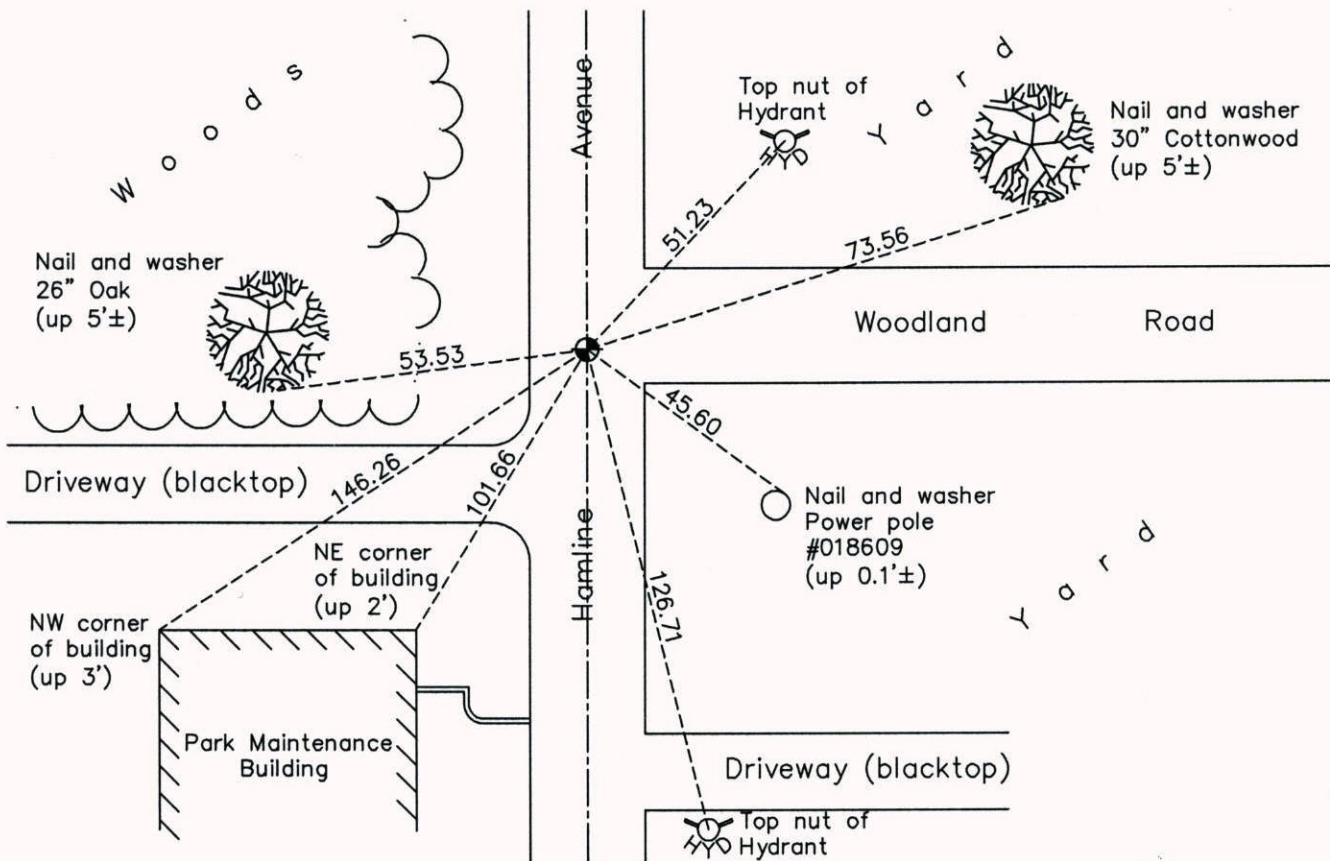
South 1/4 Corner of Sec. 26 Township 31 Range 23

On the 29th day of July, 1959, the described corner was evidenced by a concrete monument

and to perpetuate the location of said corner, at the exact location thereof, a permanent marker was placed consisting of a cast iron monument

AND on the 25th day of June, 2014, said permanent marker was found and the ties were updated.

Updated reference ties are as shown below.



Revision Date
2/26/15

N.A.D. 1983 Coordinates
(1996 Adjustment)

County Project Coordinates	
Northing	<u>137770.6123</u>
Easting	<u>523924.8474</u>
Date	<u>10/28/98</u>

I hereby certify that this United States public land survey monument record is correct and complete to the best of my knowledge and belief.

Larry D. Hoium Date 2/26/15

Larry D. Hoium, Anoka County Surveyor
Minnesota License Number 18165