

CERTIFICATE OF LOCATION OF GOVERNMENT CORNER

County of Anoka

State of Minnesota

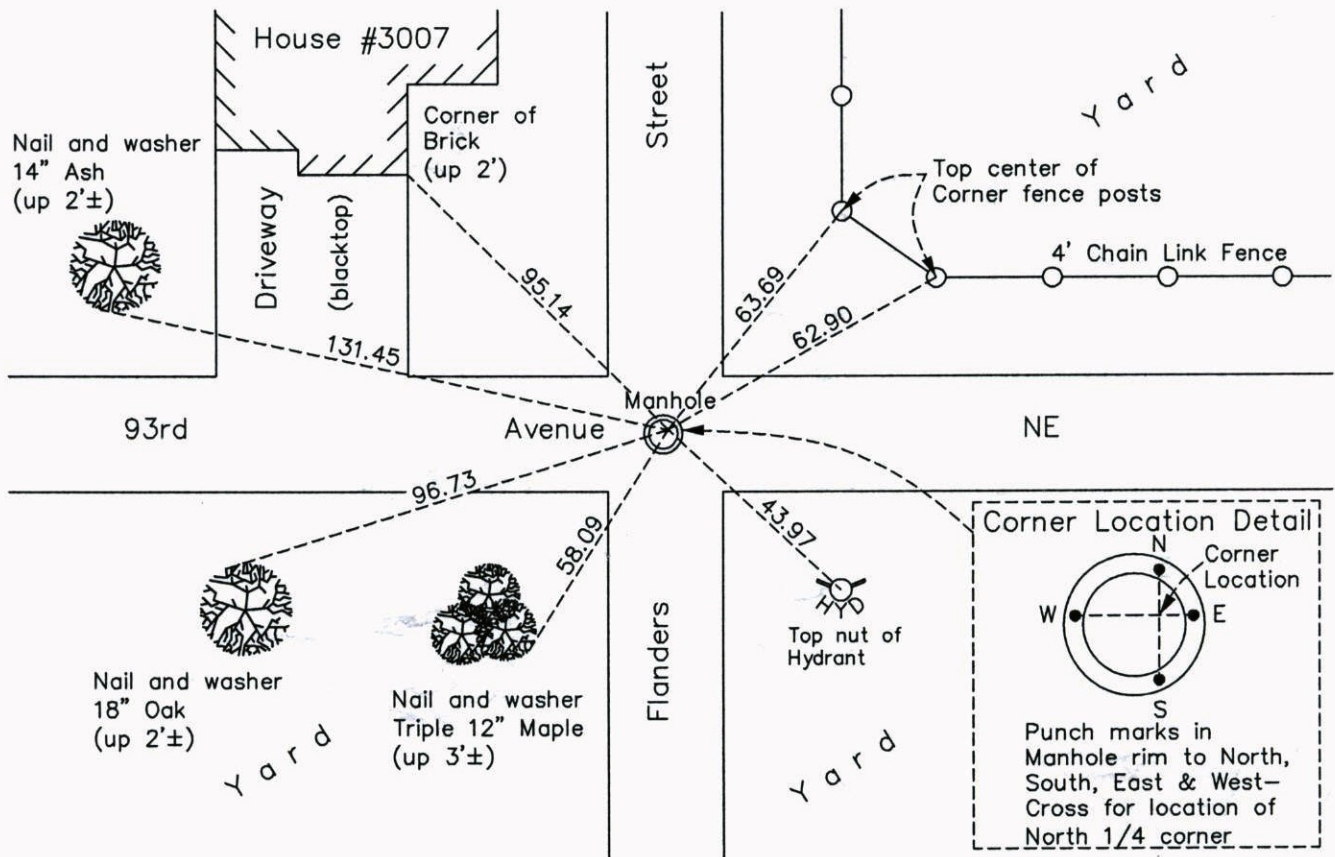
North 1/4 Corner of Sec. 34 Township 31 Range 23

On the 23rd day of October, 1961, the described corner was evidenced by an iron pipe

and to perpetuate the location of said corner, at the exact location thereof, a permanent marker was placed consisting of a location on a manhole cover

AND on the 20th day of June, 2014, said permanent marker was found and the ties were updated

Updated reference ties are as shown below.



N
W ANOKA COUNTY SURVEYOR E
S

Revision Date
2/27/15

N.A.D. 1983 Coordinates
(1996 Adjustment)

County Project Coordinates	
Northing	137806.8425
Easting	518630.3319
Date	2/03/00

I hereby certify that this United States public land survey monument record is correct and complete to the best of my knowledge and belief.

Larry D. Hoium Date 2/27/15

Larry D. Hoium, Anoka County Surveyor
Minnesota License Number 18165