

CERTIFICATE OF LOCATION OF GOVERNMENT CORNER

County of Anoka

State of Minnesota

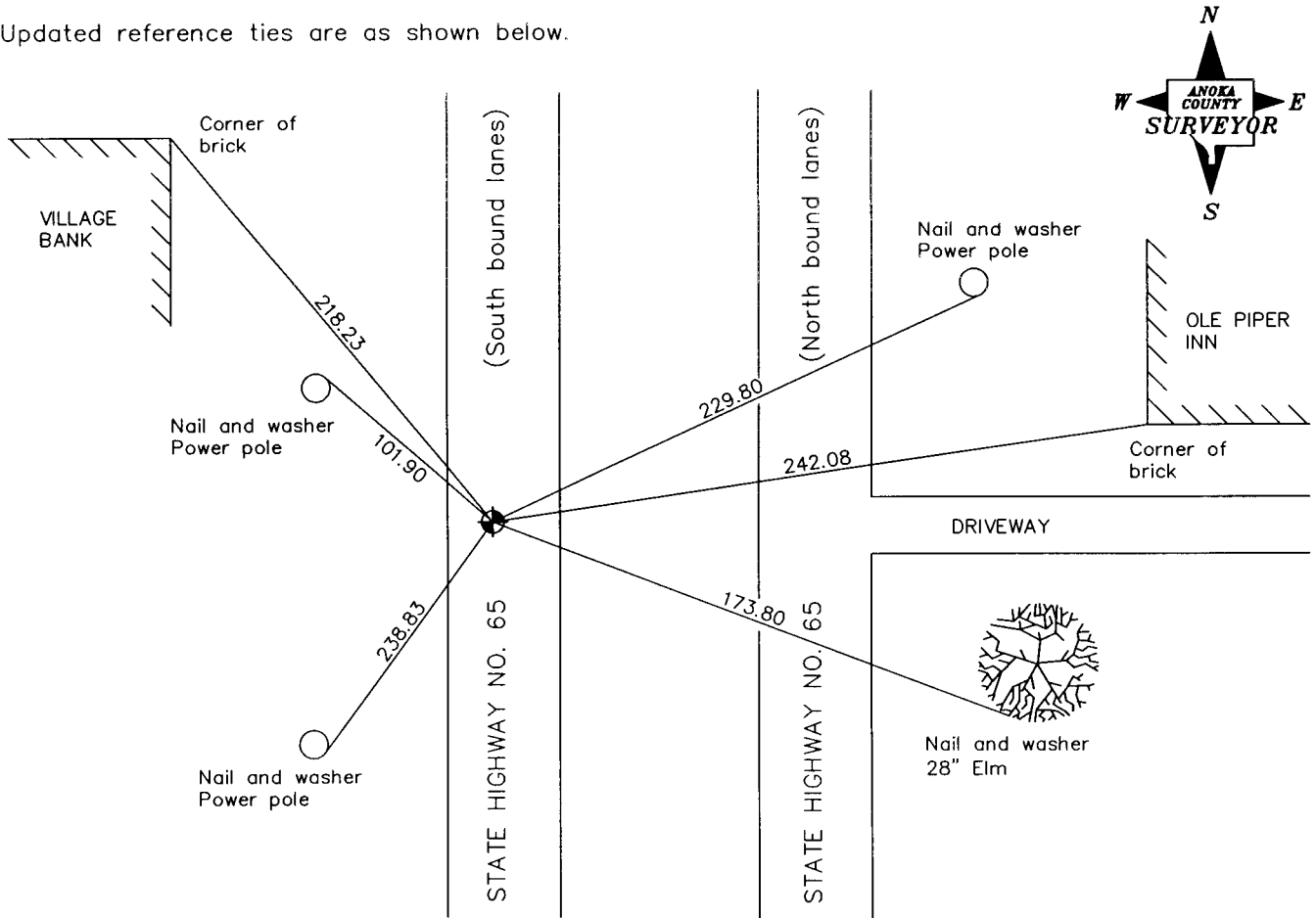
North 1/4 Corner of Sec. 32 Township 31 Range 23

On the ___ day of ___ July ___, 1957, the described corner was evidenced by a P.K. nail

and to perpetuate the location of said corner, at the exact location thereof, a permanent marker was placed consisting of a cast iron monument

AND on the 6th day of September, 2006, said permanent marker was not found and a 1/2" x 12" iron pipe was set using area resurvey

Updated reference ties are as shown below.



Revised date

7/11/90
10/24/90
7/18/95
Reset 9/6/06

N.A.D. 1983 Coordinates
(1996 Adjustment)

County Project Coordinates	
Northing	137852.2318
Easting	508041.7970
Date	9/6/06

I hereby certify that this United States public land survey monument record is correct and complete to the best of my knowledge and belief.

Larry D. Hoium Date 6/29/07

Larry D. Hoium, Anoka County Surveyor

Minnesota License Number 18165