

# CERTIFICATE OF LOCATION OF GOVERNMENT CORNER

County of Anoka

State of Minnesota

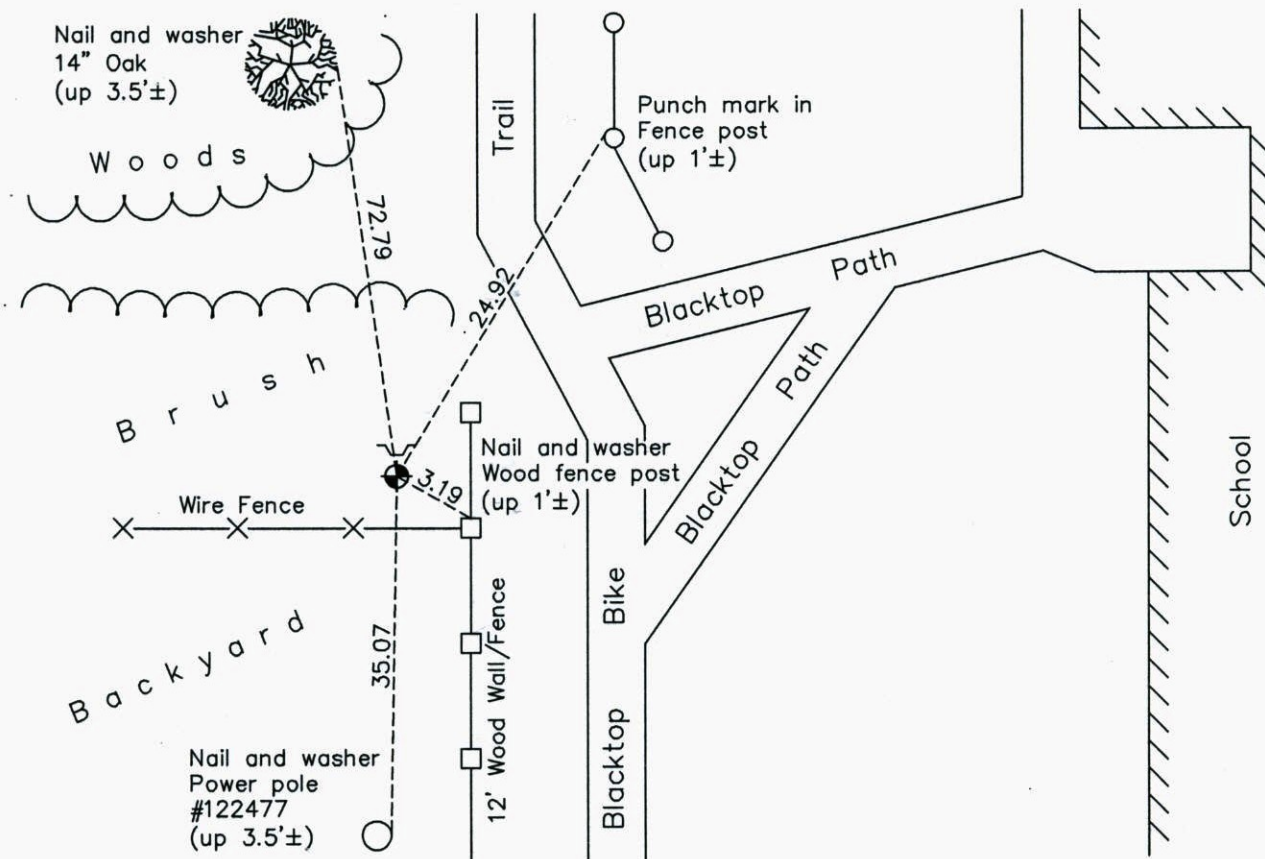
## North 1/4 Corner of Sec. 31 Township 31 Range 23

On the 19th day of December, 1990, the described corner was evidenced by a concrete monument

and to perpetuate the location of said corner, at the exact location thereof, a permanent marker was placed consisting of a cast iron monument with a sign and post 0.5'± north of monument, facing north

AND on the 17th day of June, 2014, said permanent marker was found and the ties were updated

Updated reference ties are as shown below.



Revision Date  
3/04/15

N.A.D. 1983 Coordinates  
(1996 Adjustment)

County Project Coordinates	
Northing	137849.9453
Easting	502752.6625
Date	6/29/99

I, hereby certify that this United States public land survey monument record is correct and complete to the best of my knowledge and belief.

*Larry D. Hoium* Date 3/04/15  
 Larry D. Hoium, Anoka County Surveyor  
 Minnesota License Number 18165