

CERTIFICATE OF LOCATION OF GOVERNMENT CORNER

County of Anoka

State of Minnesota

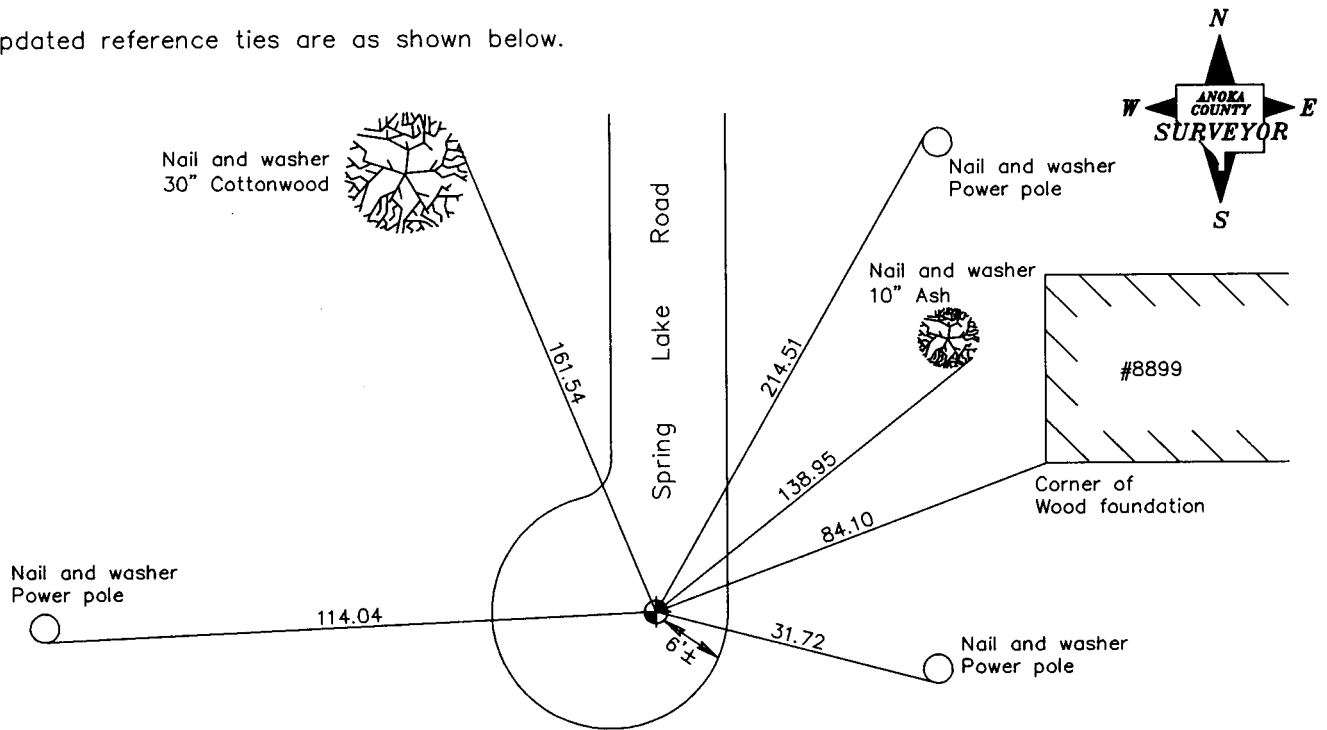
West 1/4 Corner of Sec. 33 Township 31 Range 23

On the 29th day of March, 1963, the described corner was evidenced by a 1/2" iron pipe

and to perpetuate the location of said corner, at the exact location thereof, a permanent marker was placed consisting of a cast iron monument

AND on the 2nd day of August, 2006, said permanent marker was found and the ties were updated

Updated reference ties are as shown below.



State Highway No. 10

Revised date
7/05/95
7/08/99
8/02/06

N.A.D. 1983 Coordinates (1996 Adjustment)	
County Project Coordinates	
Northing	<u>135190.1717</u>
Easting	<u>510712.1662</u>
Date	<u>7/08/99</u>

I hereby certify that this United States public land survey monument record is correct and complete to the best of my knowledge and belief.

Larry D. Hoium Date 8/02/06

Larry D. Hoium, Anoka County Surveyor

Minnesota License Number 18165