

CERTIFICATE OF LOCATION OF GOVERNMENT CORNER

County of Anoka State of Minnesota

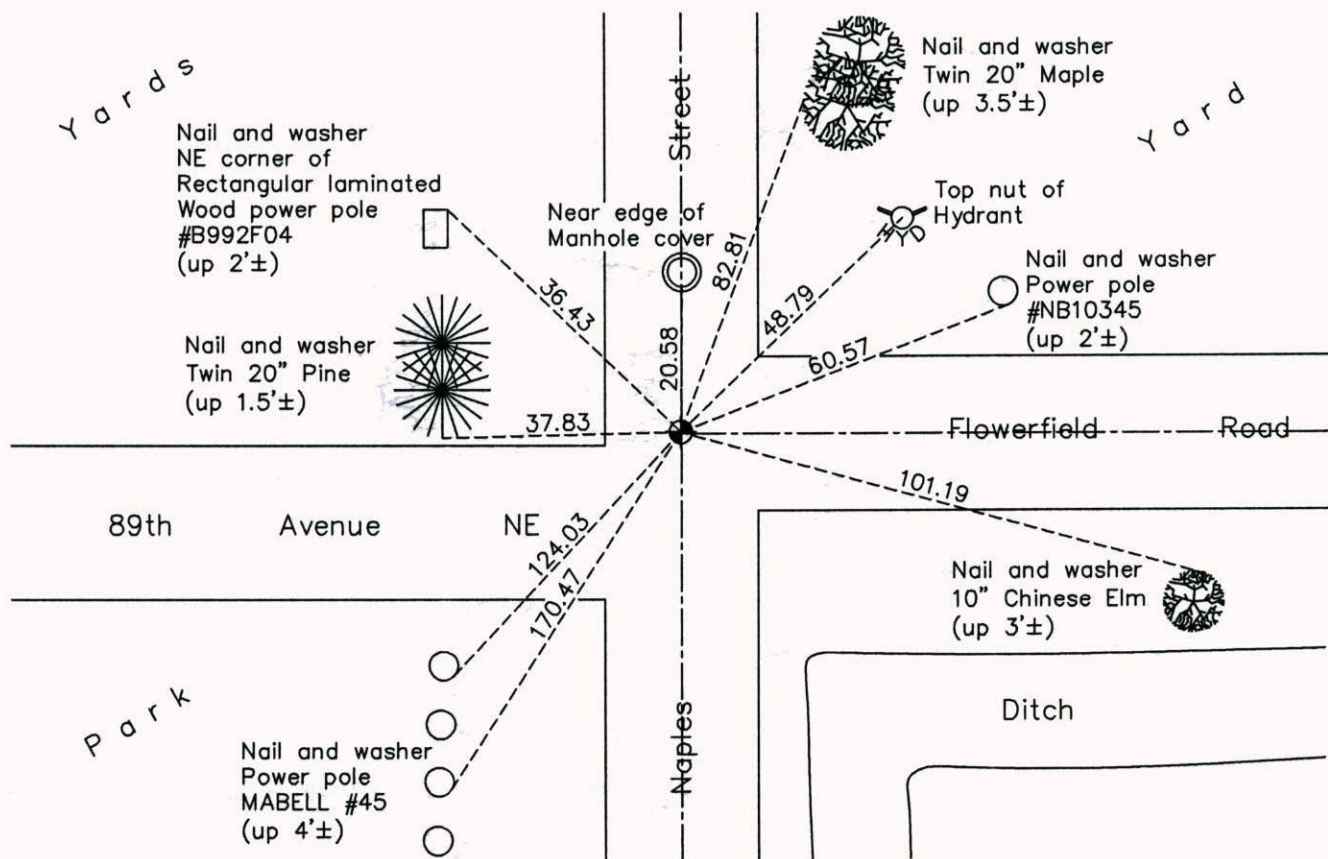
West 1/4 Corner of Sec. 35 Township 31 Range 23

On the 28th day of June, 1966, the described corner was evidenced by construction
ties

and to perpetuate the location of said corner, at the exact location thereof, a permanent marker was placed consisting of a cast iron monument

AND on the 24th day of June, 2014, said permanent marker was found and the ties
were updated

Updated reference ties are as shown below.



N
W ANOKA COUNTY SURVEYOR E
S

Revision Date
3/04/15

N.A.D. 1983 Coordinates
(1996 Adjustment)

County Project Coordinates	
Northing	135141.9097
Easting	521263.3049
Date	10/28/98

I hereby certify that this United States public land survey monument record is correct and complete to the best of my knowledge and belief.

Larry D. Hoium Date 3/04/15

Larry D. Hoium, Anoka County Surveyor
Minnesota License Number 18165