

CERTIFICATE OF LOCATION OF GOVERNMENT CORNER

County of Anoka

State of Minnesota

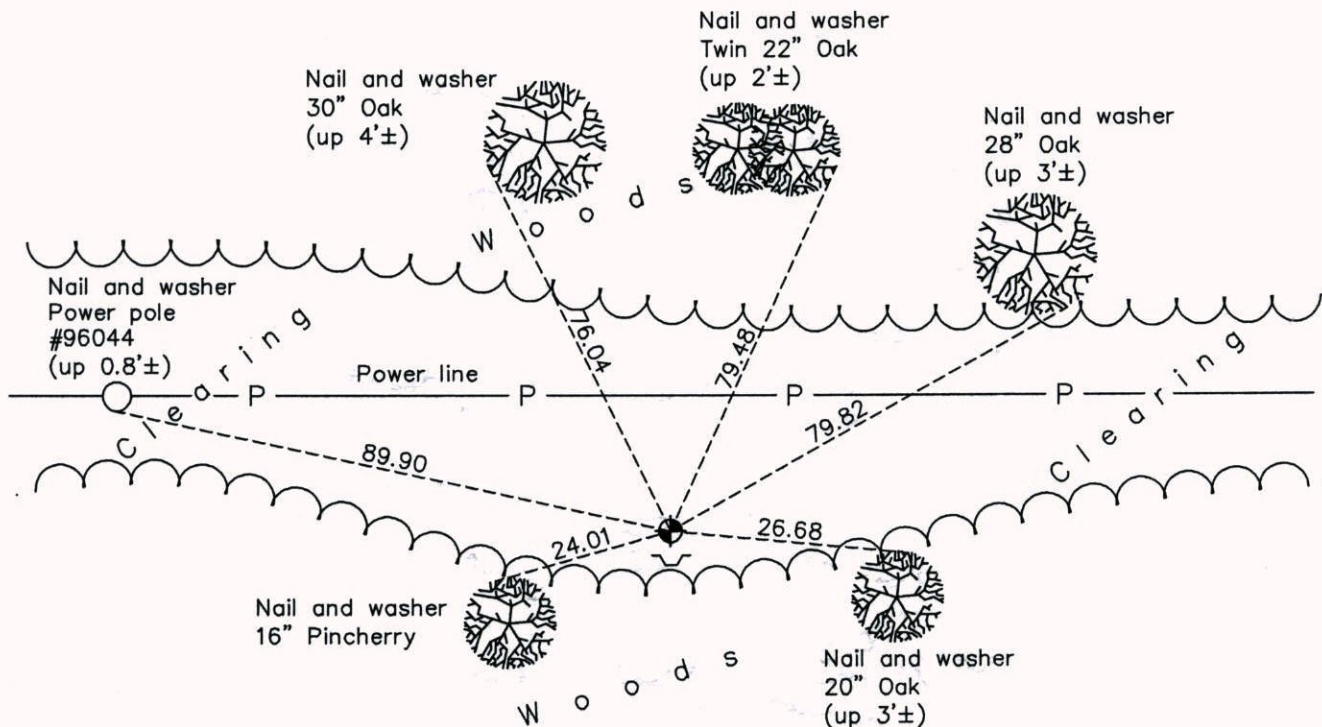
East 1/4 Corner of Sec. 36 Township 31 Range 23

On the 5th day of August, 1990, the described corner was evidenced by a 1/2" iron pipe

and to perpetuate the location of said corner, at the exact location thereof, a permanent marker was placed consisting of a cast iron monument with a sign and post on the south side

AND on the 18th day of July, 2014, said permanent marker was found and the ties
were updated

Updated reference ties are as shown below.



Revision Date
3/04/15

N.A.D. 1983 Coordinates
(1996 Adjustment)

County Project Coordinates	
Northing	135042.8985
Easting	531864.3778
Date	2/09/00

I hereby certify that this United States public land survey monument record is correct and complete to the best of my knowledge and belief.

Larry D. Hoium Date 3/04/15

Larry D. Hoium, Anoka County Surveyor
Minnesota License Number 18165