

CERTIFICATE OF LOCATION OF GOVERNMENT CORNER

County of Anoka

State of Minnesota

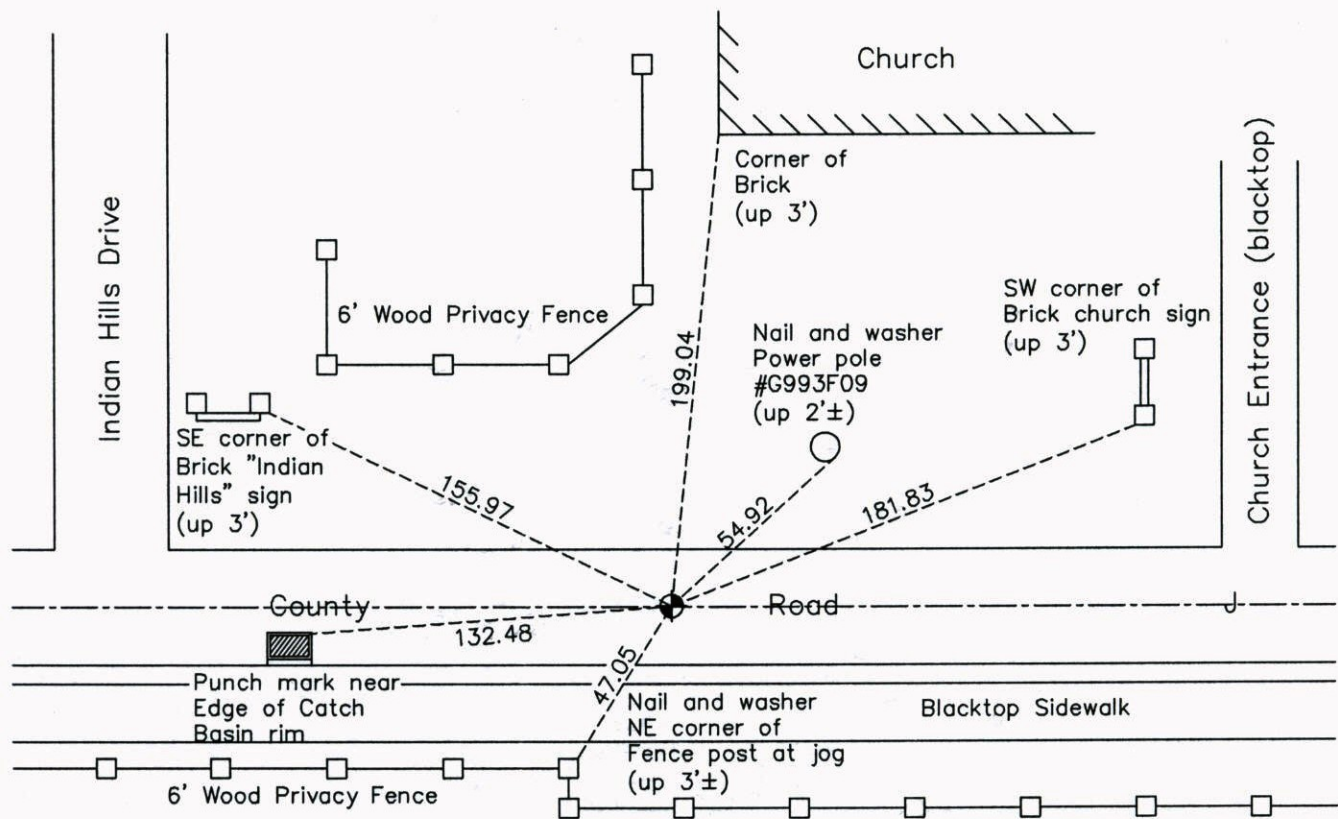
Southeast Corner of Sec. 36 Township 31 Range 23

On the 9th day of April, 1962, the described corner was evidenced by a 1/2" bridge spike

and to perpetuate the location of said corner, at the exact location thereof, a permanent marker was placed consisting of a cast iron monument

AND on the 18th day of July, 2014, said permanent marker was found and the ties were updated

Updated reference ties are as shown below.



N
W ANOKA COUNTY SURVEYOR E
S

Revision Date
3/04/15

N.A.D. 1983 Coordinates
(1996 Adjustment)

County Project Coordinates	
Northing	132448.4878
Easting	531839.8455
Date	6/25/98

I hereby certify that this United States public land survey monument record is correct and complete to the best of my knowledge and belief.

Larry D. Hoium Date 3/04/15
 Larry D. Hoium, Anoka County Surveyor
 Minnesota License Number 18165