

CERTIFICATE OF LOCATION OF GOVERNMENT CORNER

County of Anoka

State of Minnesota

North 1/4 Corner of Sec. 3 Township 30 Range 23

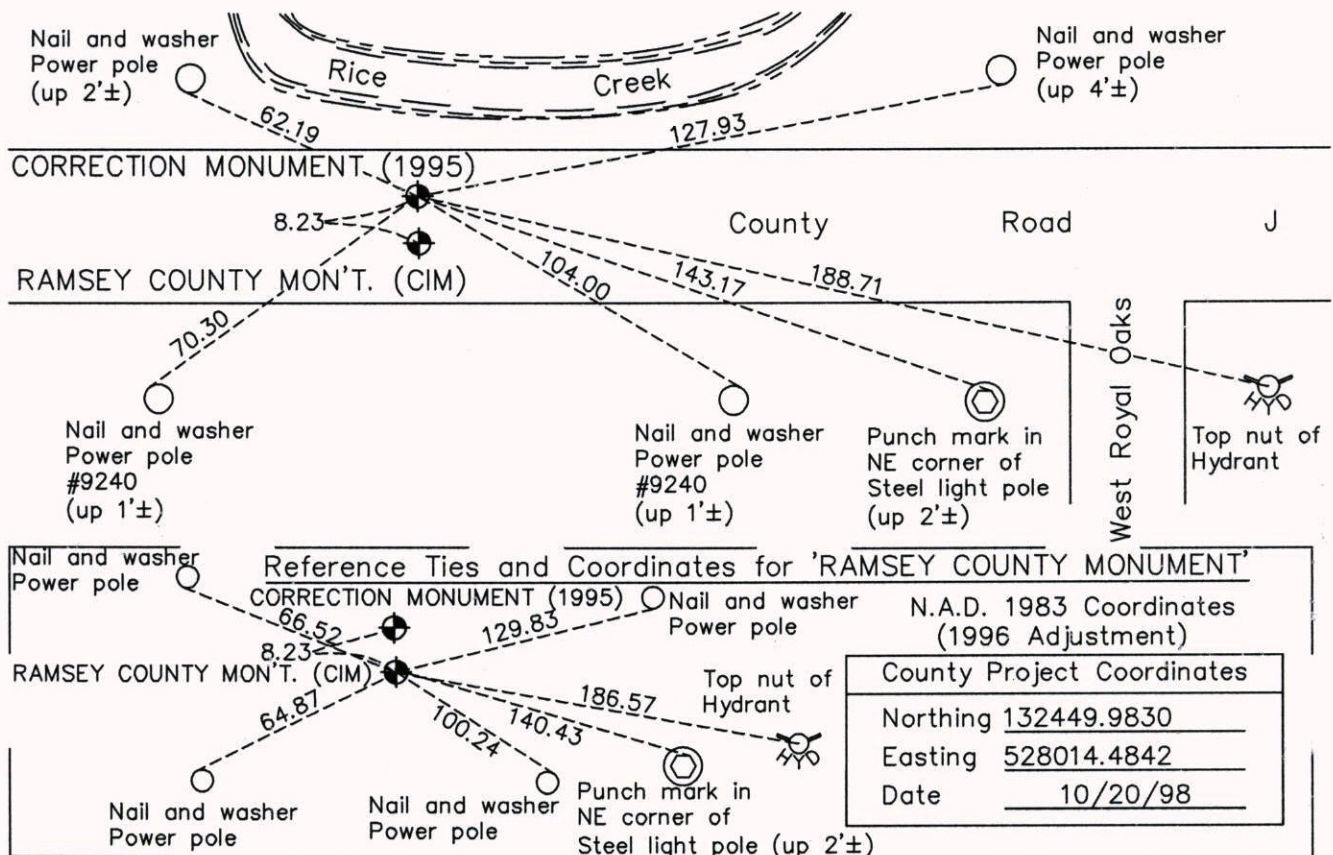
(RAMSEY COUNTY MONUMENT)

On the 26th day of April, 1963, the described corner was evidenced by a granite monument

and to perpetuate the location of said corner, at the exact location thereof, a permanent marker was placed consisting of a cast iron monument

AND on the ___ day of July, 2014, said permanent marker was found and the ties were updated. The RAMSEY COUNTY MONUMENT is on centerline.

Updated reference ties are as shown below.



Revision Date
3/06/15

N.A.D. 1983 Coordinates
(1996 Adjustment)

County Project Coordinates	
Northing	132458.3791
Easting	528014.3947
Date	10/19/98

I hereby certify that this United States public land survey monument record is correct and complete to the best of my knowledge and belief.

Larry D. Hoium Date 3/06/15

Larry D. Hoium, Anoka County Surveyor
Minnesota License Number 18165