

# CERTIFICATE OF LOCATION OF GOVERNMENT CORNER

County of Anoka

State of Minnesota

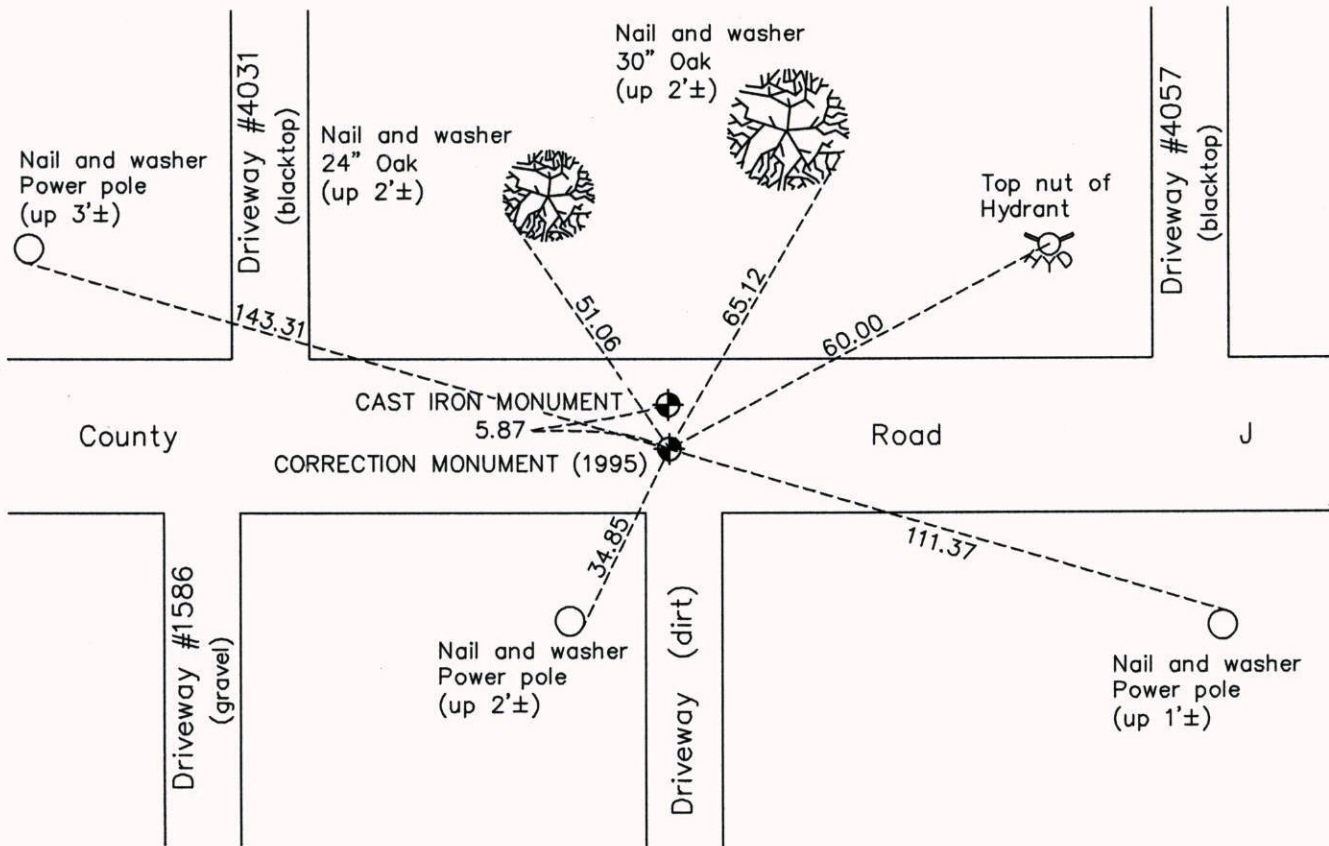
## Northwest Corner of Sec. 3 Township 30 Range 23 (RAMSEY COUNTY MONUMENT)

On the 1st day of October, 1971, the described corner was evidenced by an 8" square granite monument

and to perpetuate the location of said corner, at the exact location thereof, a permanent marker was placed consisting of a cast iron monument (Correction Monument 1995)

AND on the 16th day of July, 2014, said permanent marker was found and the ties were updated

Updated reference ties are as shown below.



ANOKA COUNTY SURVEYOR

Revision Date 3/09/15

N.A.D. 1983 Coordinates  
(1996 Adjustment)

County Project Coordinates	
Northing	<u>132471.9006</u>
Easting	<u>525375.4397</u>
Date	<u>8/03/99</u>

I hereby certify that this United States public land survey monument record is correct and complete to the best of my knowledge and belief.

Date 3/09/15

Larry D. Hoium, Anoka County Surveyor  
 Minnesota License Number 18165