

CERTIFICATE OF LOCATION OF GOVERNMENT CORNER

County of Anoka

State of Minnesota

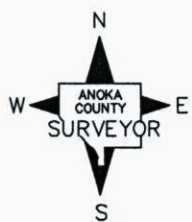
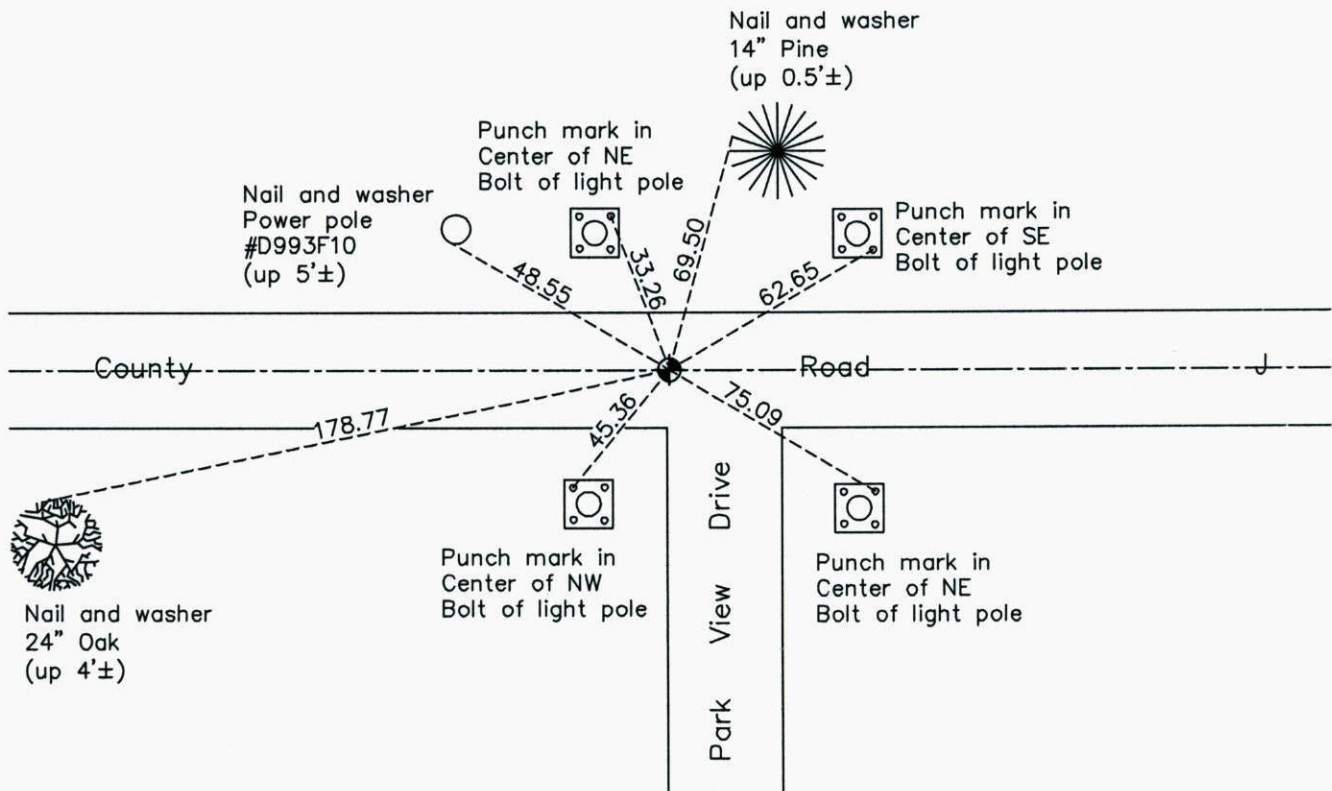
South 1/4 Corner of Sec. 35 Township 31 Range 23

On the 12th day of June, 1964, the described corner was evidenced by a 3/4" iron pipe

and to perpetuate the location of said corner, at the exact location thereof, a permanent marker was placed consisting of a cast iron monument

AND on the 16th day of July, 2014, said permanent marker was found and the ties
were updated

Updated reference ties are as shown below.



Revision Date

3/09/15

N.A.D. 1983 Coordinates
(1996 Adjustment)

County Project Coordinates	
Northing	<u>132479.6944</u>
Easting	<u>523926.5960</u>
Date	<u>7/27/99</u>

I hereby certify that this United States public land survey monument record is correct and complete to the best of my knowledge and belief.

Larry D. Hoium Date 3/09/15

Larry D. Hoium, Anoka County Surveyor

Minnesota License Number 18165