

CERTIFICATE OF LOCATION OF GOVERNMENT CORNER

County of Anoka

State of Minnesota

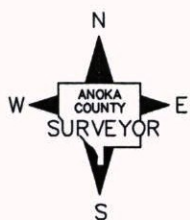
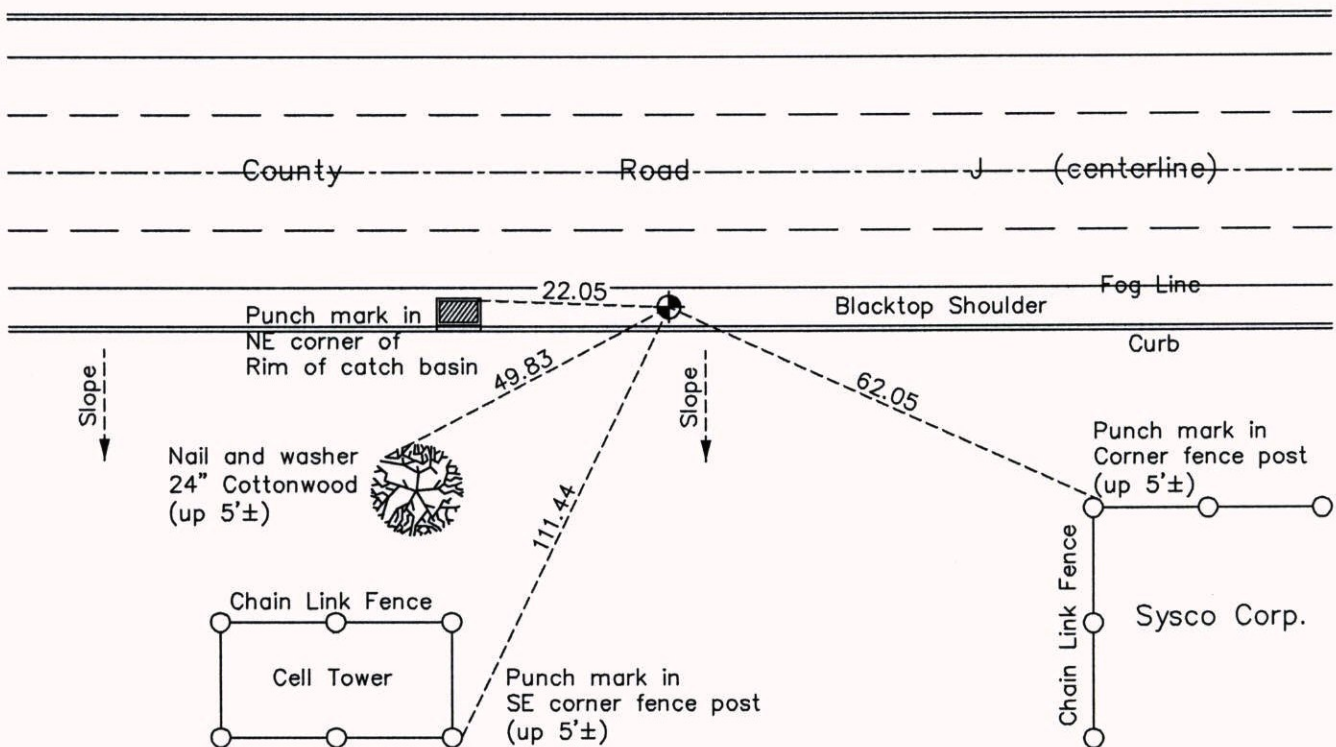
Northeast Corner of Sec. 6 Township 30 Range 23 (RAMSEY COUNTY MONUMENT)

On the 27th day of October, 1964, the described corner was evidenced by a 6" square granite monument

and to perpetuate the location of said corner, at the exact location thereof, a permanent marker was placed consisting of a cast iron monument

AND on the 3rd day of July, 2014, said permanent marker was found in a covered tube and the the ties were updated

Updated reference ties are as shown below.



Revision Date

3/10/15

N.A.D. 1983 Coordinates
(1996 Adjustment)

County Project Coordinates

Northing 132515.8502

Easting 514824.4879

Date 8/03/99

I hereby certify that this United States public land survey monument record is correct and complete to the best of my knowledge and belief.

Larry D. Hoium Date 3/10/15

Larry D. Hoium, Anoka County Surveyor

Minnesota License Number 18165