

CERTIFICATE OF LOCATION OF GOVERNMENT CORNER

County of Anoka

State of Minnesota

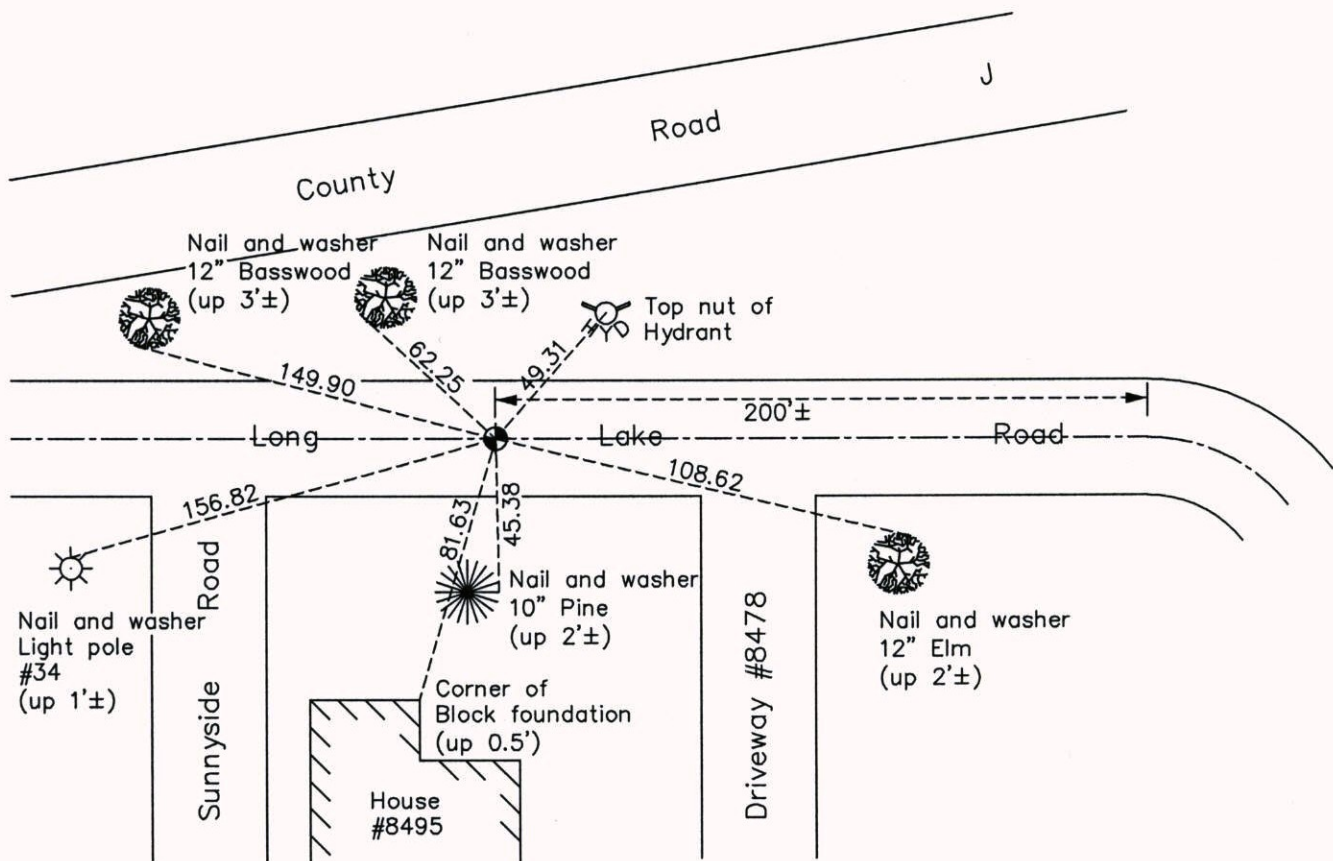
South 1/4 Corner of Sec. 33 Township 31 Range 23

On the 16th day of November, 1964, the described corner was evidenced by area resurvey

and to perpetuate the location of said corner, at the exact location thereof, a permanent marker was placed consisting of a cast iron monument

AND on the 3rd day of July, 2014, said permanent marker was found and the ties were updated

Updated reference ties are as shown below.



N.A.D. 1983 Coordinates
(1996 Adjustment)

County Project Coordinates

Northing 132524.4447

Easting 513361.9500

Date 7/29/99

I hereby certify that this United States public land survey monument record is correct and complete to the best of my knowledge and belief.

Larry D. Hoium Date 3/10/15

Larry D. Hoium, Anoka County Surveyor

Minnesota License Number 18165

Revision Date

3/10/15