

CERTIFICATE OF LOCATION OF GOVERNMENT CORNER

County of Anoka

State of Minnesota

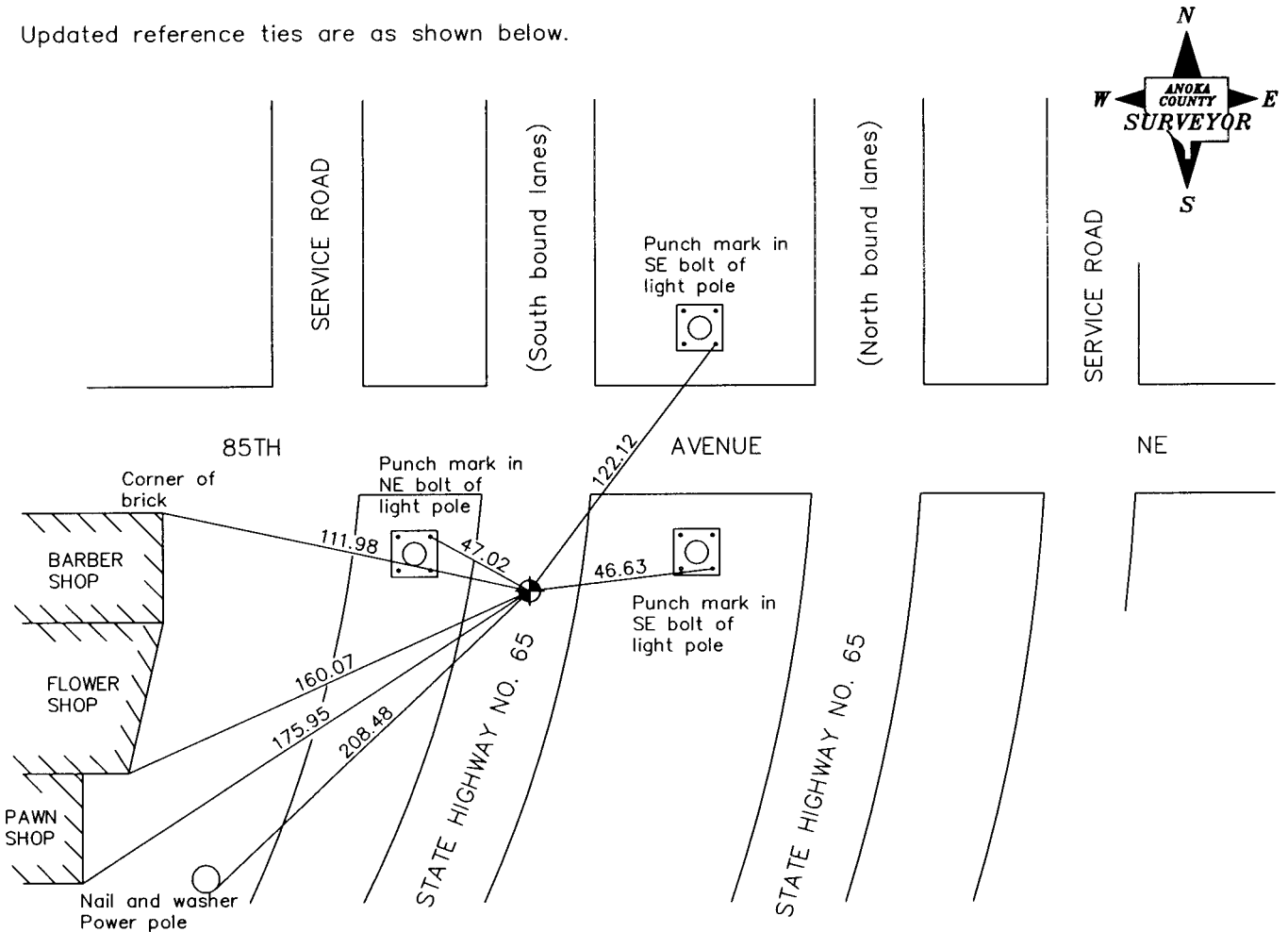
South $\frac{1}{4}$ Corner of Sec. 32 Township 31 Range 23

On the 31st day of December, 1964, the described corner was evidenced by a P.K. nail set
from platting

and to perpetuate the location of said corner, at the exact location thereof, a permanent marker
 was placed consisting of a cast iron monument

AND on the 7th day of September, 2006, said permanent marker was not found and a 1/2" x 11"
iron pipe was set using area resurvey

Updated reference ties are as shown below.



Revised date
6/3/86
7/11/90
7/18/95
Reset 9/7/06

N.A.D. 1983 Coordinates (1996 Adjustment)	
County Project Coordinates	
Northing	132558.5766
Easting	508044.4209
Date	9/7/06

I hereby certify that this United States public land survey monument record is correct and complete to the best of my knowledge and belief.

Larry D. Hoium Date 6/29/07

Larry D. Hoium, Anoka County Surveyor

Minnesota License Number 18165