

CERTIFICATE OF LOCATION OF GOVERNMENT CORNER

County of Anoka

State of Minnesota

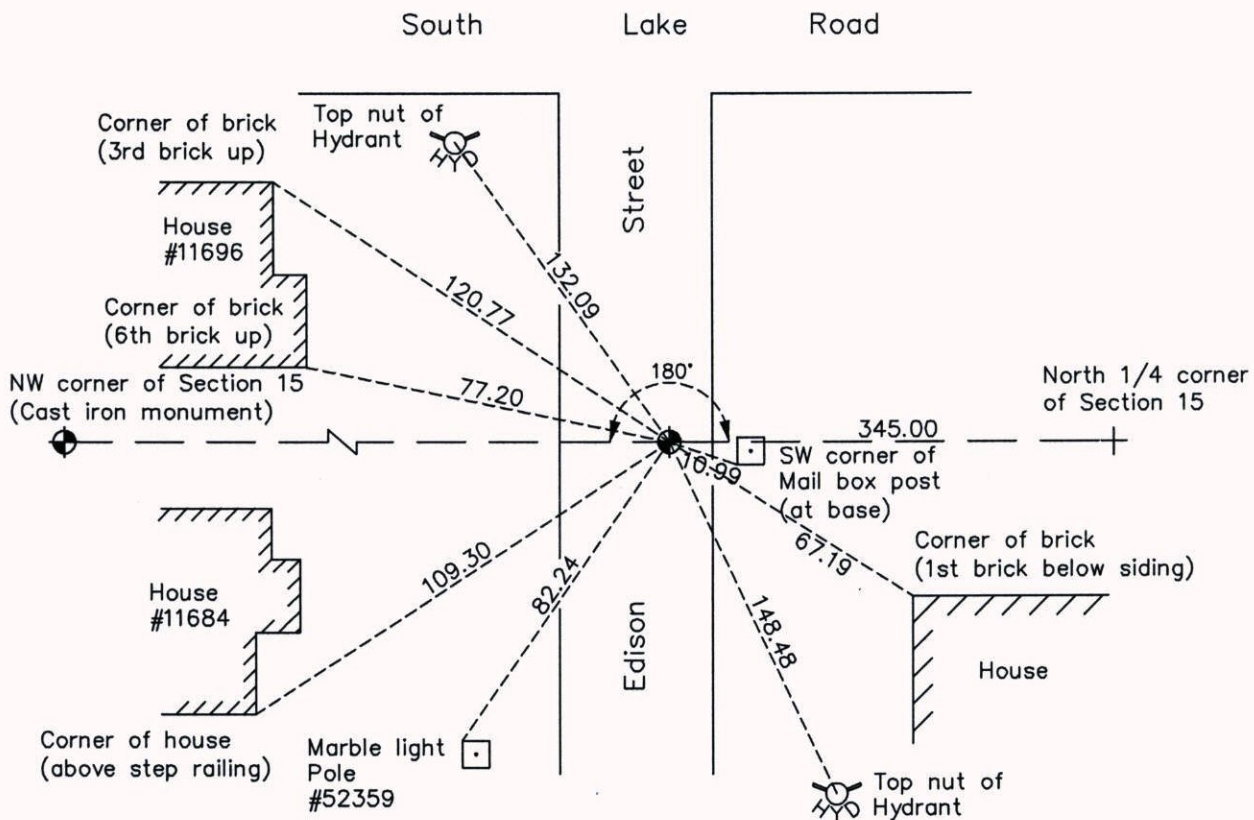
Witness Corner of Sec. 15 Township 31 Range 23
 (on north line of NW 1/4)

On the 15th day of June, 2006, the described corner was evidenced by area resurvey

and to perpetuate the location of said corner, at the exact location thereof, a permanent marker was placed consisting of a cast iron monument

AND on the 15th day of May, 2014, said permanent marker was found with top missing. Raised to the surface and the ties were updated.

Updated reference ties are as shown below.



Revision Date
3/12/15

N.A.D. 1983 Coordinates
 (1996 Adjustment)

County Project Coordinates	
Northing	153667.9783
Easting	518390.9184
Date	6/15/06

I hereby certify that this United States public land survey monument record is correct and complete to the best of my knowledge and belief.

Larry D. Hoium Date 3/12/15

Larry D. Hoium, Anoka County Surveyor
 Minnesota License Number 18165