

CERTIFICATE OF LOCATION OF GOVERNMENT CORNER

County of Anoka

State of Minnesota

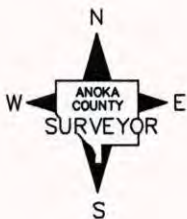
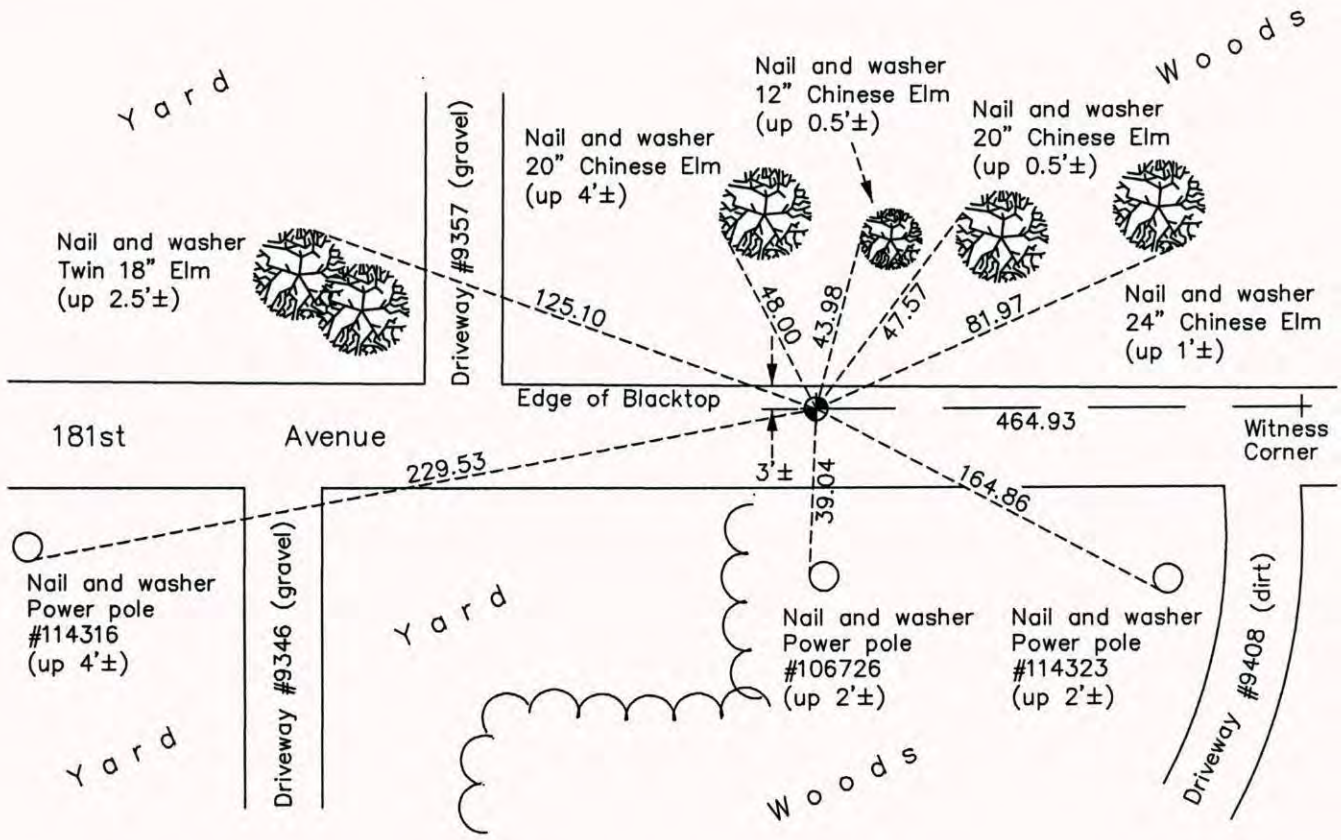
North 1/4 Corner of Sec. 1 Township 32 Range 22

On the 14th day of July, 1982, the described corner was evidenced by a 1/2" iron pipe set by Don Hult and area resurvey proved the position

and to perpetuate the location of said corner, at the exact location thereof, a permanent marker was placed consisting of a cast iron monument

AND on the 7th day of October, 2014, said permanent marker was found and the ties were updated

Updated reference ties are as shown below.



Revision Date
4/22/15

N.A.D. 1983 Coordinates
(1996 Adjustment)

County Project Coordinates	
Northing	195505.1400
Easting	561014.9371
Date	6/16/03

I hereby certify that this United States public land survey monument record is correct and complete to the best of my knowledge and belief.

Larry D. Hoium Date 4/22/15

Larry D. Hoium, Anoka County Surveyor
Minnesota License Number 18165