

CERTIFICATE OF LOCATION OF GOVERNMENT CORNER

County of Anoka

State of Minnesota

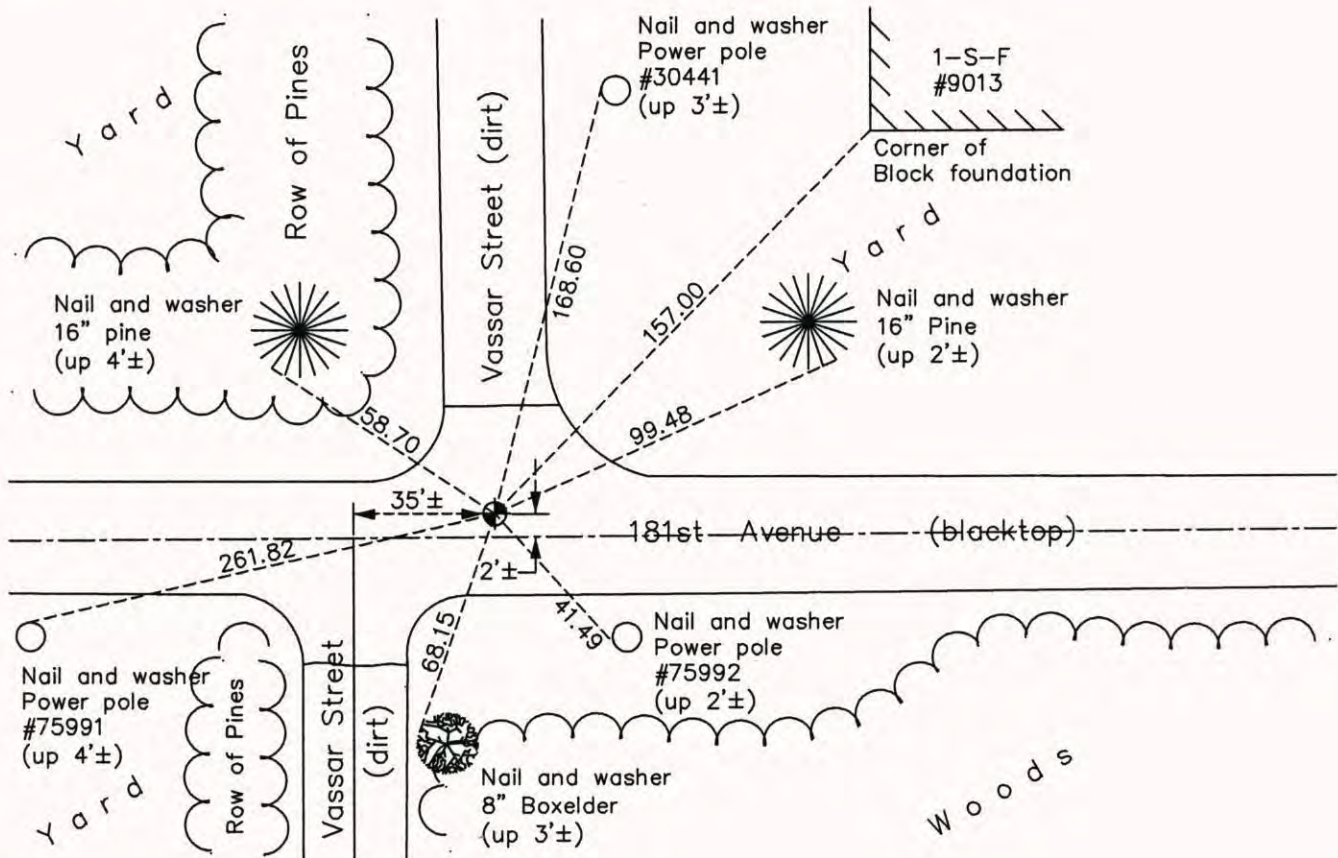
Northeast Corner of Sec. 2 Township 32 Range 22

On the 10th day of May, 1965, the described corner was evidenced by a 3/4" iron pipe from Don Hult ties

and to perpetuate the location of said corner, at the exact location thereof, a permanent marker was placed consisting of a cast iron monument

AND on the 7th day of October, 2014, said permanent marker was found and the ties were updated

Updated reference ties are as shown below.



Revision Date
4/23/15

N.A.D. 1983 Coordinates
(1996 Adjustment)

County Project Coordinates	
Northing	<u>195505.4874</u>
Easting	<u>558380.0867</u>
Date	<u>6/16/03</u>

I hereby certify that this United States public land survey monument record is correct and complete to the best of my knowledge and belief.

Larry D. Hoium Date 4/23/15

Larry D. Hoium, Anoka County Surveyor
Minnesota License Number 18165