

CERTIFICATE OF LOCATION OF GOVERNMENT CORNER

County of Anoka

State of Minnesota

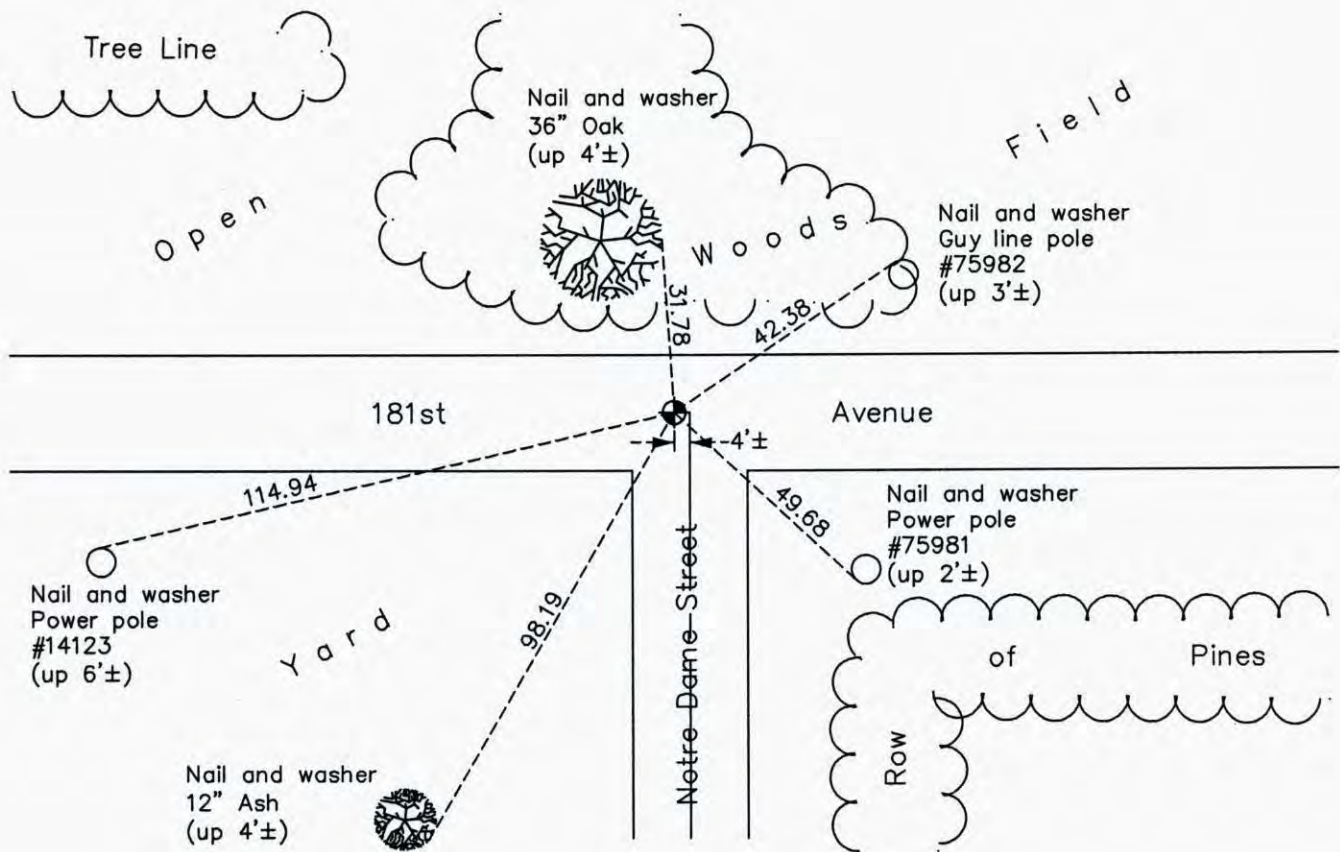
North 1/4 Corner of Sec. 2 Township 32 Range 22

On the day of May, 1965, the described corner was evidenced by a broken off cast iron monument over a 6" square stone

and to perpetuate the location of said corner, at the exact location thereof, a permanent marker was placed consisting of a cast iron monument

AND on the 8th day of October, 2014, said permanent marker was found and the ties were updated

Updated reference ties are as shown below.



Revision Date

4/23/15

N.A.D. 1983 Coordinates
(1996 Adjustment)

County Project Coordinates	
Northing	<u>195508.4252</u>
Easting	<u>555751.9940</u>
Date	<u>6/17/03</u>

I hereby certify that this United States public land survey monument record is correct and complete to the best of my knowledge and belief.

Larry D. Hoium Date 4/23/15

Larry D. Hoium, Anoka County Surveyor
Minnesota License Number 18165