

CERTIFICATE OF LOCATION OF GOVERNMENT CORNER

County of Anoka

State of Minnesota

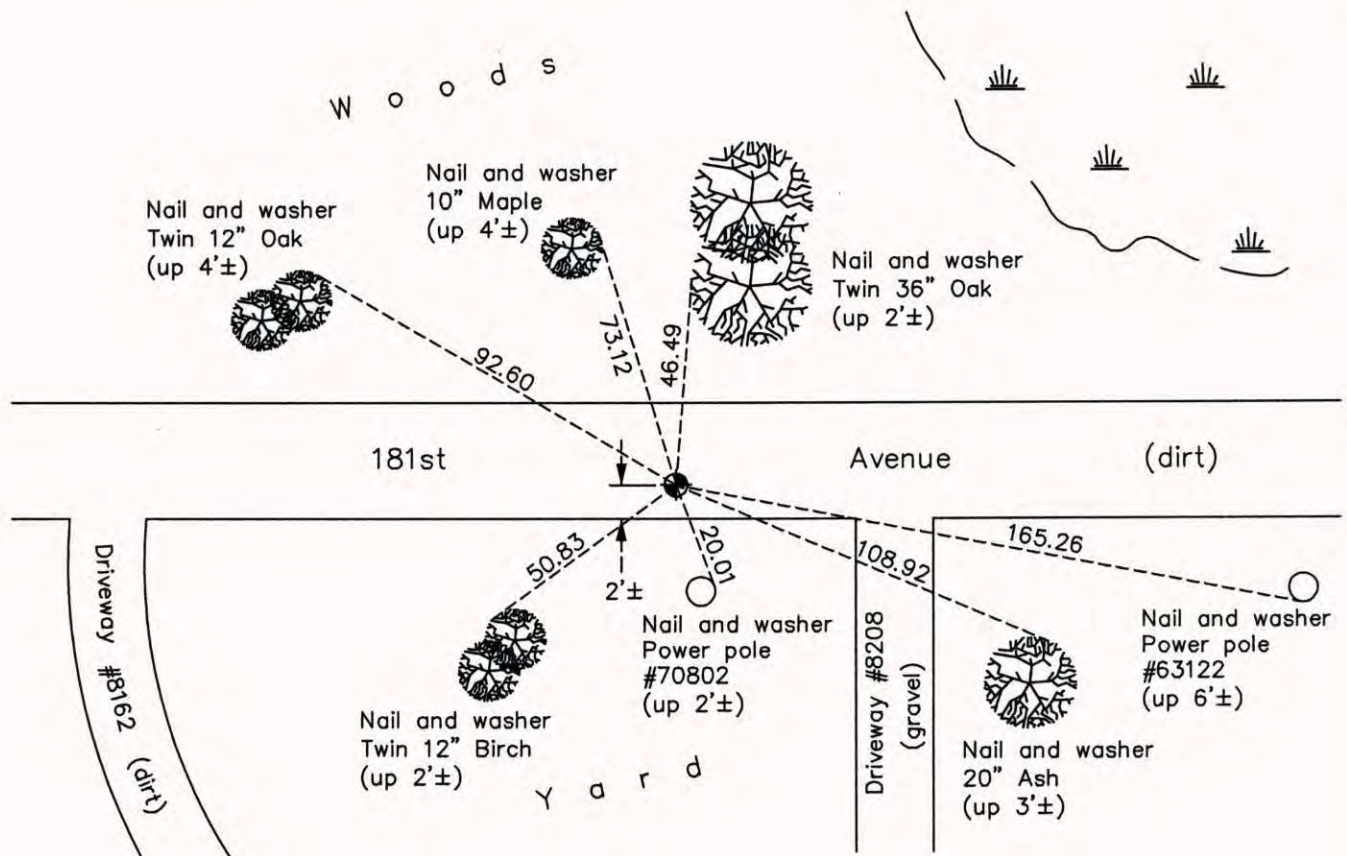
Northeast Corner of Sec. 3 Township 32 Range 22

On the 23rd day of March, 1979, the described corner was evidenced by a 1/2" iron pipe

and to perpetuate the location of said corner, at the exact location thereof, a permanent marker was placed consisting of a cast iron monument

AND on the 8th day of October, 2014, said permanent marker was found down 1'± and the ties were updated

Updated reference ties are as shown below.



N

 ANOKA COUNTY SURVEYOR
 E
 S
 Revision Date
4/24/15

N.A.D. 1983 Coordinates
(1996 Adjustment)

County Project Coordinates	
Northing	195497.1924
Easting	553100.6985
Date	6/17/03

I hereby certify that this United States public land survey monument record is correct and complete to the best of my knowledge and belief.

Date 4/24/15

Larry D. Hoium, Anoka County Surveyor
 Minnesota License Number 18165