

CERTIFICATE OF LOCATION OF GOVERNMENT CORNER

County of Anoka

State of Minnesota

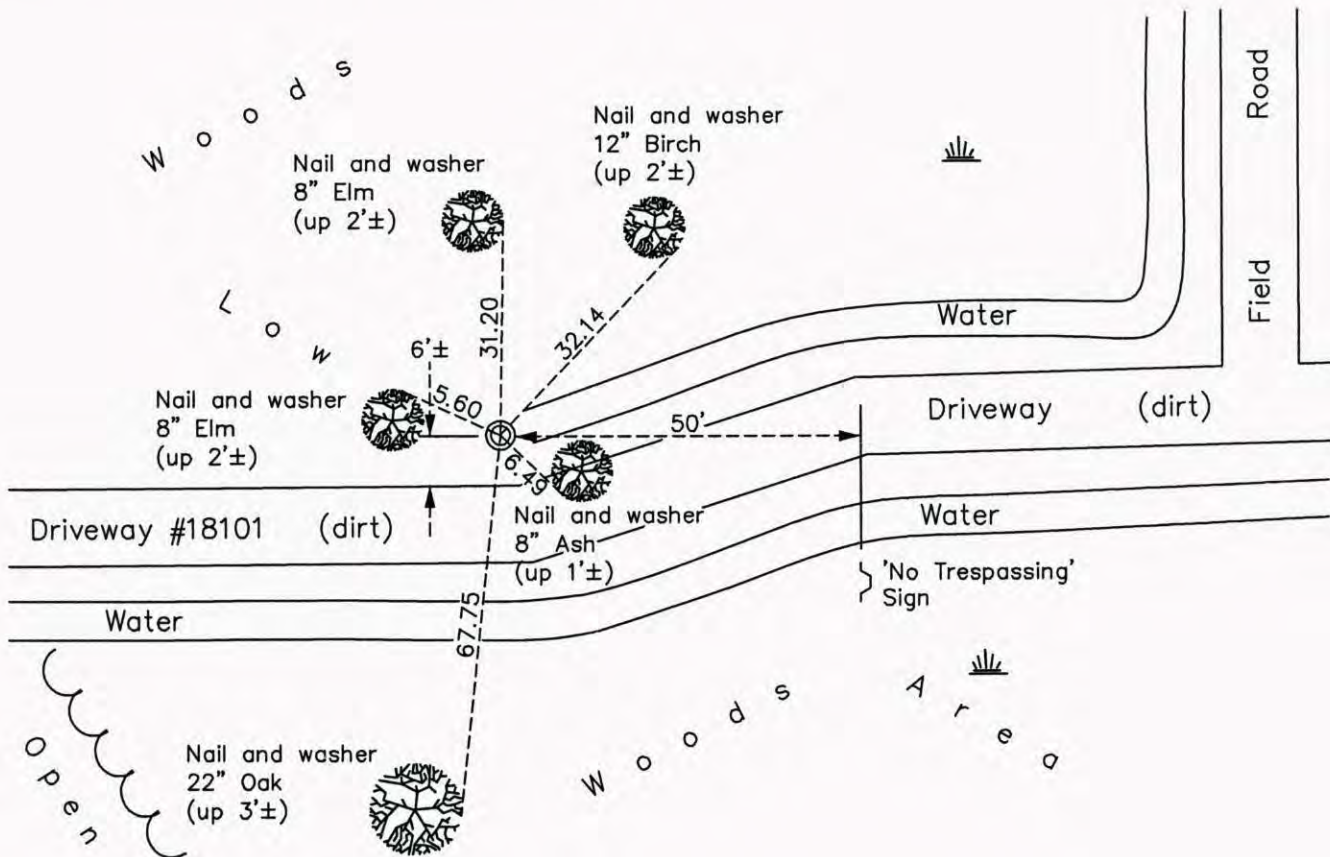
North 1/4 Corner of Sec. 6 Township 32 Range 22

On the 3rd day of September, 1964, the described corner was evidenced by a concrete monument

and to perpetuate the location of said corner, at the exact location thereof, a permanent marker was placed consisting of a red and white iron pipe

AND on the 30th day of September, 2014, said permanent marker was found up 5'± and leaning slightly west. The ties were updated

Updated reference ties are as shown below.



Revision Date
4/28/15

N.A.D. 1983 Coordinates
(1996 Adjustment)

County Project Coordinates	
Northing	195563.5940
Easting	534696.3937
Date	7/01/03

I hereby certify that this United States public land survey monument record is correct and complete to the best of my knowledge and belief.

Larry D. Hoium Date 4/28/15

Larry D. Hoium, Anoka County Surveyor
Minnesota License Number 18165