

# CERTIFICATE OF LOCATION OF GOVERNMENT CORNER

County of Anoka

State of Minnesota

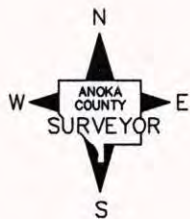
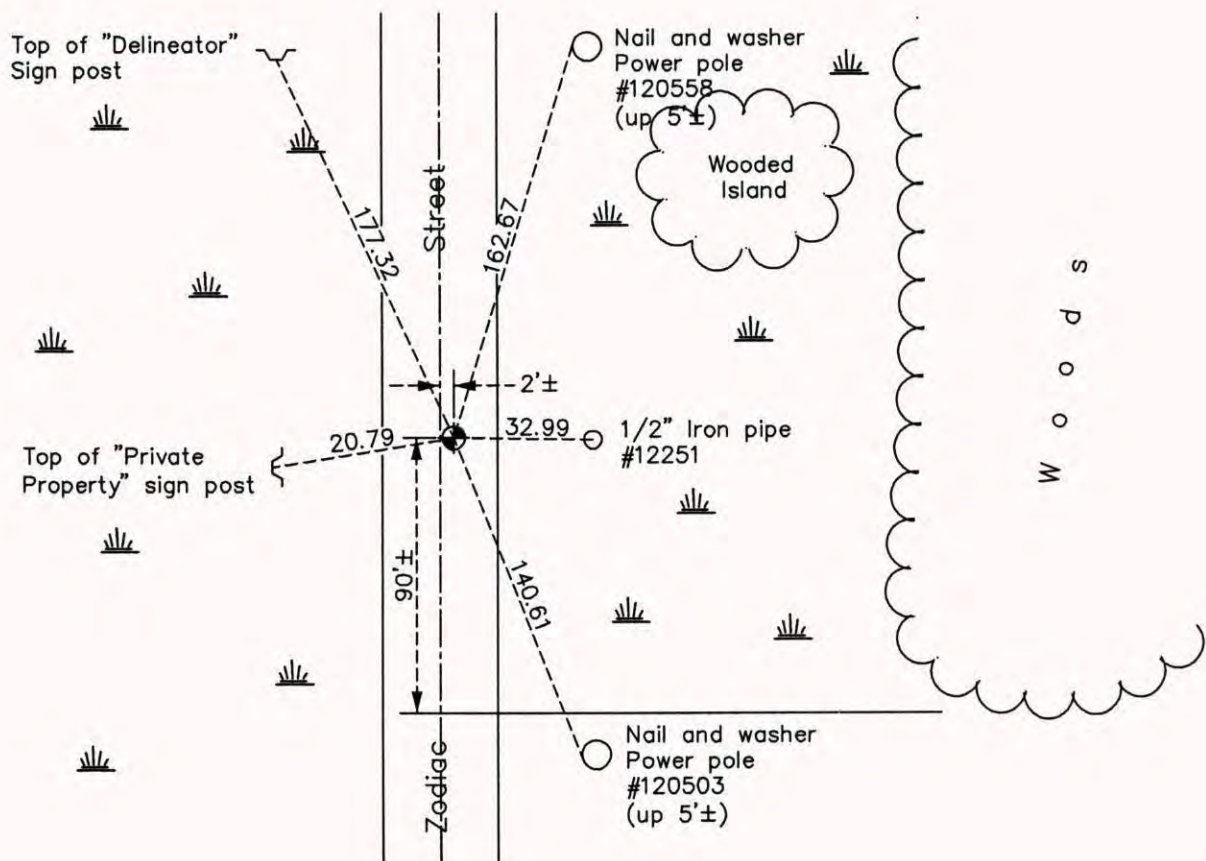
## West 1/4 Corner of Sec. 4 Township 32 Range 22

On the 6th day of March, 1974, the described corner was evidenced by an iron pipe set using Carlos Avery information

and to perpetuate the location of said corner, at the exact location thereof, a permanent marker was placed consisting of a cast iron monument

AND on the 9th day of September, 2014, said permanent marker was found down 2'± and the ties were updated

Updated reference ties are as shown below.



Revision Date  
4/29/15

N.A.D. 1983 Coordinates  
(1996 Adjustment)

County Project Coordinates	
Northing	193102.5610
Easting	542630.4687
Date	6/05/03

I hereby certify that this United States public land survey monument record is correct and complete to the best of my knowledge and belief.

*Larry D. Hoium* Date 4/29/15

Larry D. Hoium, Anoka County Surveyor  
Minnesota License Number 18165