

# CERTIFICATE OF LOCATION OF GOVERNMENT CORNER

County of Anoka

State of Minnesota

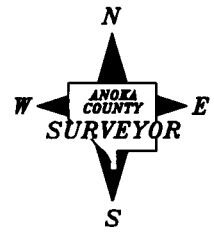
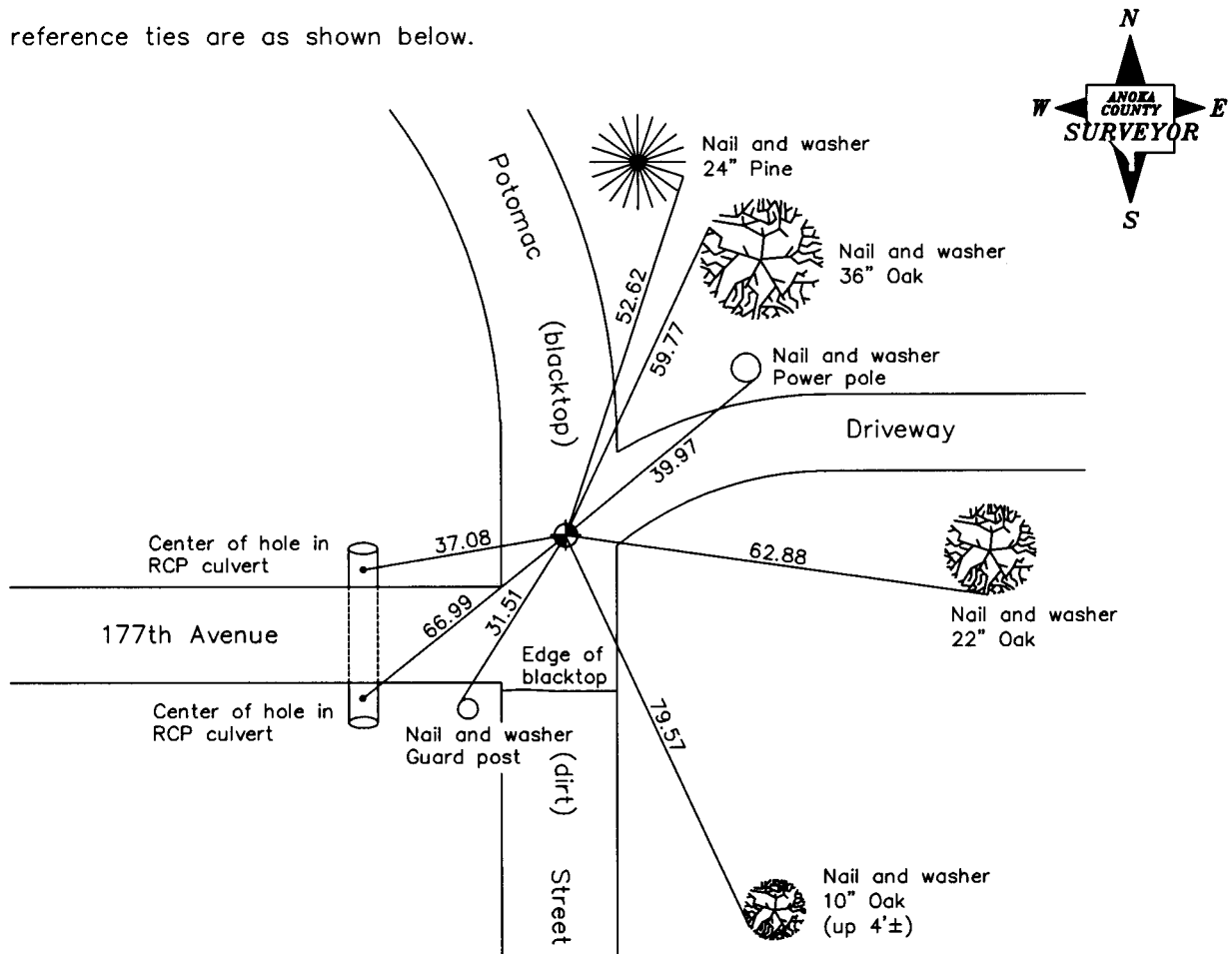
East 1/4 Corner of Sec. 4 Township 32 Range 22

On the 18th day of September, 1964, the described corner was evidenced by a 1-1/2" well point from ties by R.M. Knutson

and to perpetuate the location of said corner, at the exact location thereof, a permanent marker was placed consisting of a cast iron monument set 9/11/69

AND on the 7th day of November, 2007, said permanent marker was found broken off and the ties were updated

Updated reference ties are as shown below.



| Revised date |
|--------------|
| 8/09/89      |
| 8/09/95      |
| 11/07/07     |
|              |
|              |

|  |
|--|
| N.A.D. 1983 Coordinates<br>(1996 Adjustment) |
| County Project Coordinates                   |
| Northing <u>193083.1770</u>                  |
| Easting <u>547895.9607</u>                   |
| Date <u>6/24/03</u>                          |

I hereby certify that this United States public land survey monument record is correct and complete to the best of my knowledge and belief.

*Larry D. Hoium* Date 11/07/07

\_\_\_\_\_  
Larry D. Hoium, Anoka County Surveyor

Minnesota License Number 18165