

CERTIFICATE OF LOCATION OF GOVERNMENT CORNER

County of Anoka

State of Minnesota

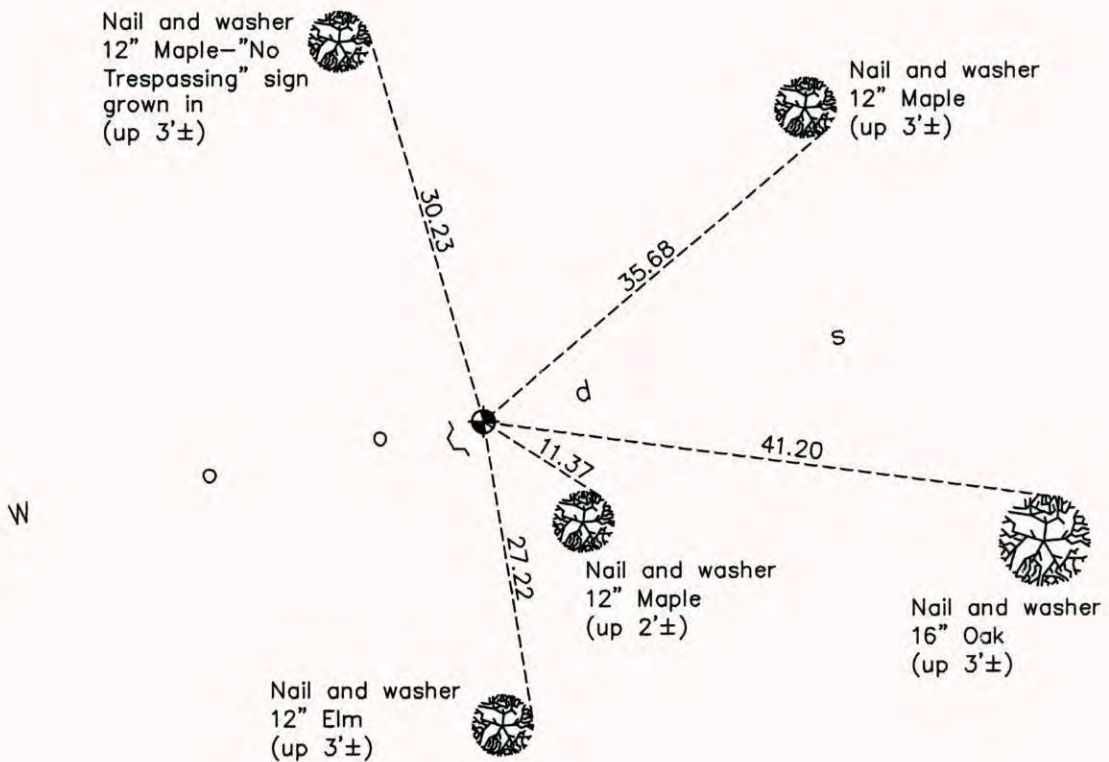
West 1/4 Corner of Sec. 2 Township 32 Range 22

On the 23rd day of September, 1969, the described corner was evidenced by a well point up 2'±

and to perpetuate the location of said corner, at the exact location thereof, a permanent marker was placed consisting of a cast iron monument with a sign and post on the southwest side

AND on the 7th day of October, 2014, said permanent marker was found up 0.2'± and the ties were updated

Updated reference ties are as shown below.



Revision Date

5/05/15

N.A.D. 1983 Coordinates
(1996 Adjustment)

County Project Coordinates

Northing 193047.7205

Easting 553112.8716

Date 4/18/05

I hereby certify that this United States public land survey monument record is correct and complete to the best of my knowledge and belief.

Larry D. Holium Date 5/05/15

Larry D. Holium, Anoka County Surveyor

Minnesota License Number 18165