

# CERTIFICATE OF LOCATION OF GOVERNMENT CORNER

County of Anoka

State of Minnesota

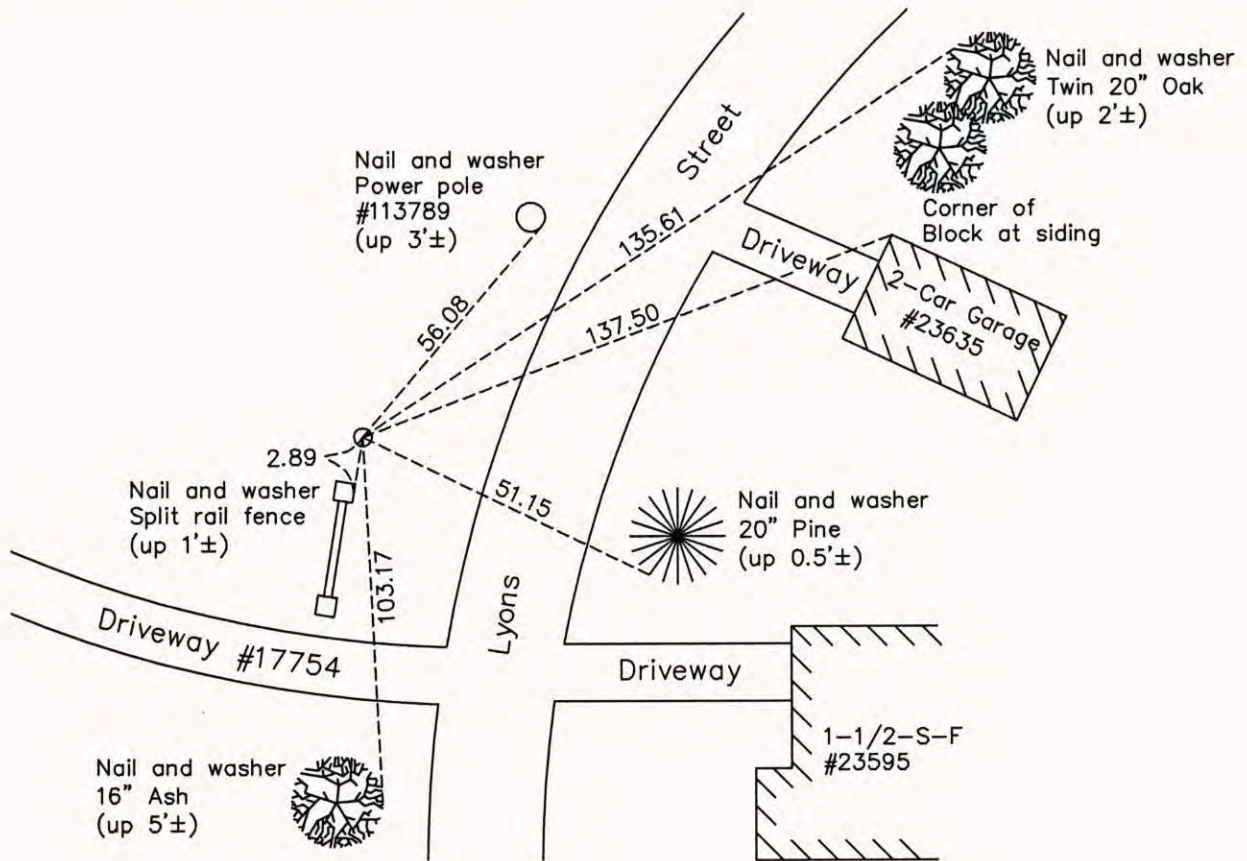
Witness Corner of Sec. 1 Township 32 Range 22  
 (on east line of NE 1/4)

On the 3rd day of August, 1964, the described corner was evidenced by Don Hult's ties

and to perpetuate the location of said corner, at the exact location thereof, a permanent marker was placed consisting of a 1/2" iron pipe

AND on the 23rd day of September, 2014, said permanent marker was found and an "Anoka County" cap was placed in the iron pipe. The ties were updated.

Updated reference ties are as shown below.



N

S

Revision Date

5/07/15

N.A.D. 1983 Coordinates  
(1996 Adjustment)

County Project Coordinates	
Northing	193620.5910
Easting	563609.4312
Date	6/18/03

I hereby certify that this United States public land survey monument record is correct and complete to the best of my knowledge and belief.

Date 5/07/15

Larry D. Hoium, Anoka County Surveyor  
 Minnesota License Number 18165