

CERTIFICATE OF LOCATION OF GOVERNMENT CORNER

County of Anoka

State of Minnesota

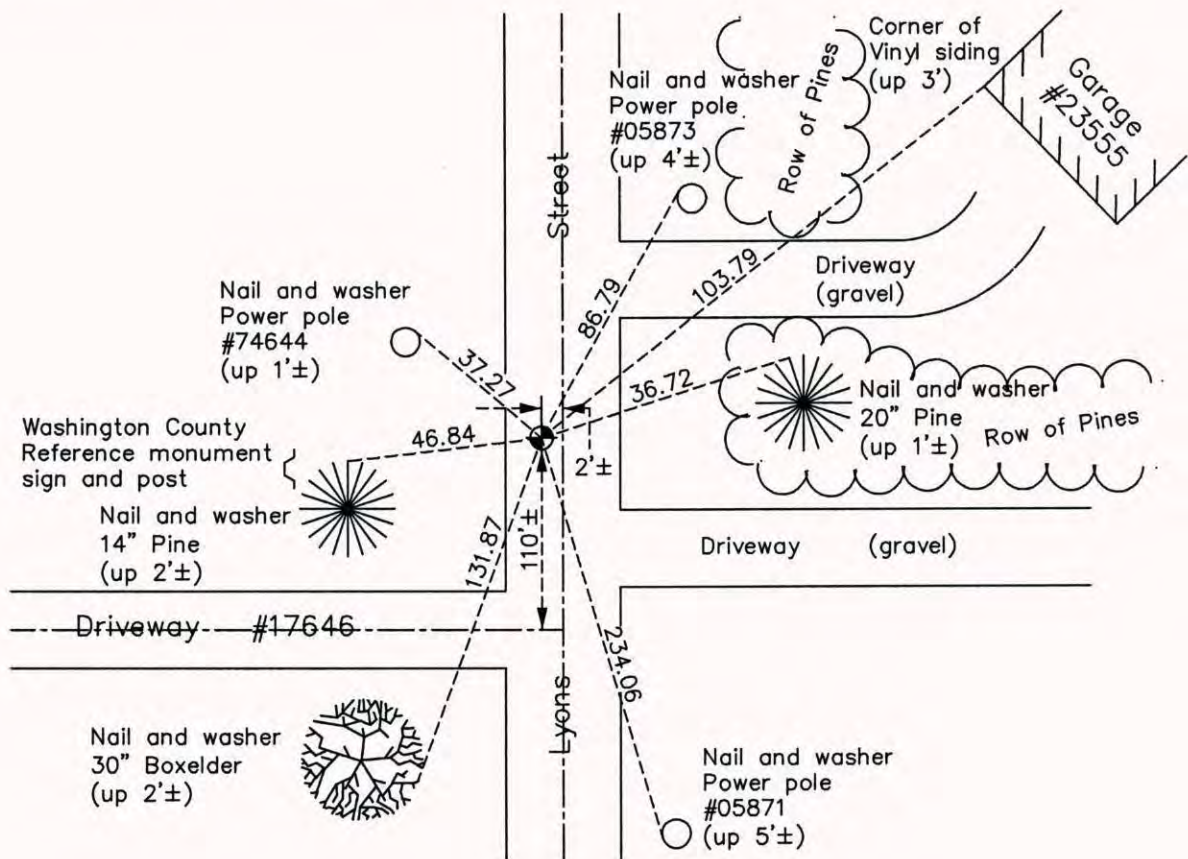
East 1/4 Corner of Sec. 1 Township 32 Range 22

On the 6th day of December, 1963, the described corner was evidenced by a 1-1/4" iron pipe

and to perpetuate the location of said corner, at the exact location thereof, a permanent marker was placed consisting of a cast iron monument

AND on the 17th day of September, 2014, said permanent marker was found and the ties were updated

Updated reference ties are as shown below.



Revision Date
5/07/15

N.A.D. 1983 Coordinates
(1996 Adjustment)

County Project Coordinates	
Northing	192958.8888
Easting	563612.4896
Date	6/18/03

I hereby certify that this United States public land survey monument record is correct and complete to the best of my knowledge and belief.

Larry D. Hoium Date 5/07/15

Larry D. Hoium, Anoka County Surveyor

Minnesota License Number 18165