

CERTIFICATE OF LOCATION OF GOVERNMENT CORNER

County of Anoka

State of Minnesota

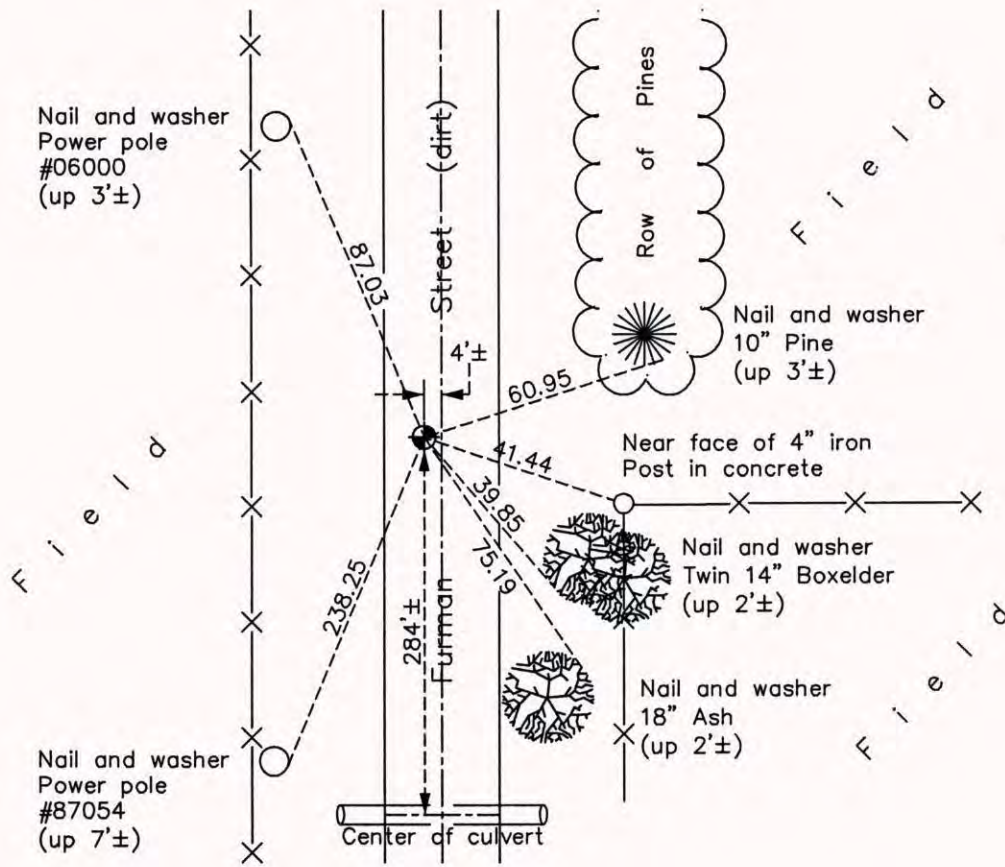
Southwest Corner of Sec. 2 Township 32 Range 22

On the 23rd day of September, 1969, the described corner was evidenced by a railroad spike

and to perpetuate the location of said corner, at the exact location thereof, a permanent marker was placed consisting of a cast iron monument

AND on the 16th day of September, 2014, said permanent marker was found down 1'± and the ties were updated

Updated reference ties are as shown below.



ANOKA COUNTY SURVEYOR

Revision Date

5/11/15

N.A.D. 1983 Coordinates
(1996 Adjustment)

County Project Coordinates	
Northing	190424.1537
Easting	553124.8869
Date	6/17/03

I hereby certify that this United States public land survey monument record is correct and complete to the best of my knowledge and belief.

Larry D. Hoium Date 5/11/15

Larry D. Hoium, Anoka County Surveyor

Minnesota License Number 18165