

# CERTIFICATE OF LOCATION OF GOVERNMENT CORNER

County of Anoka

State of Minnesota

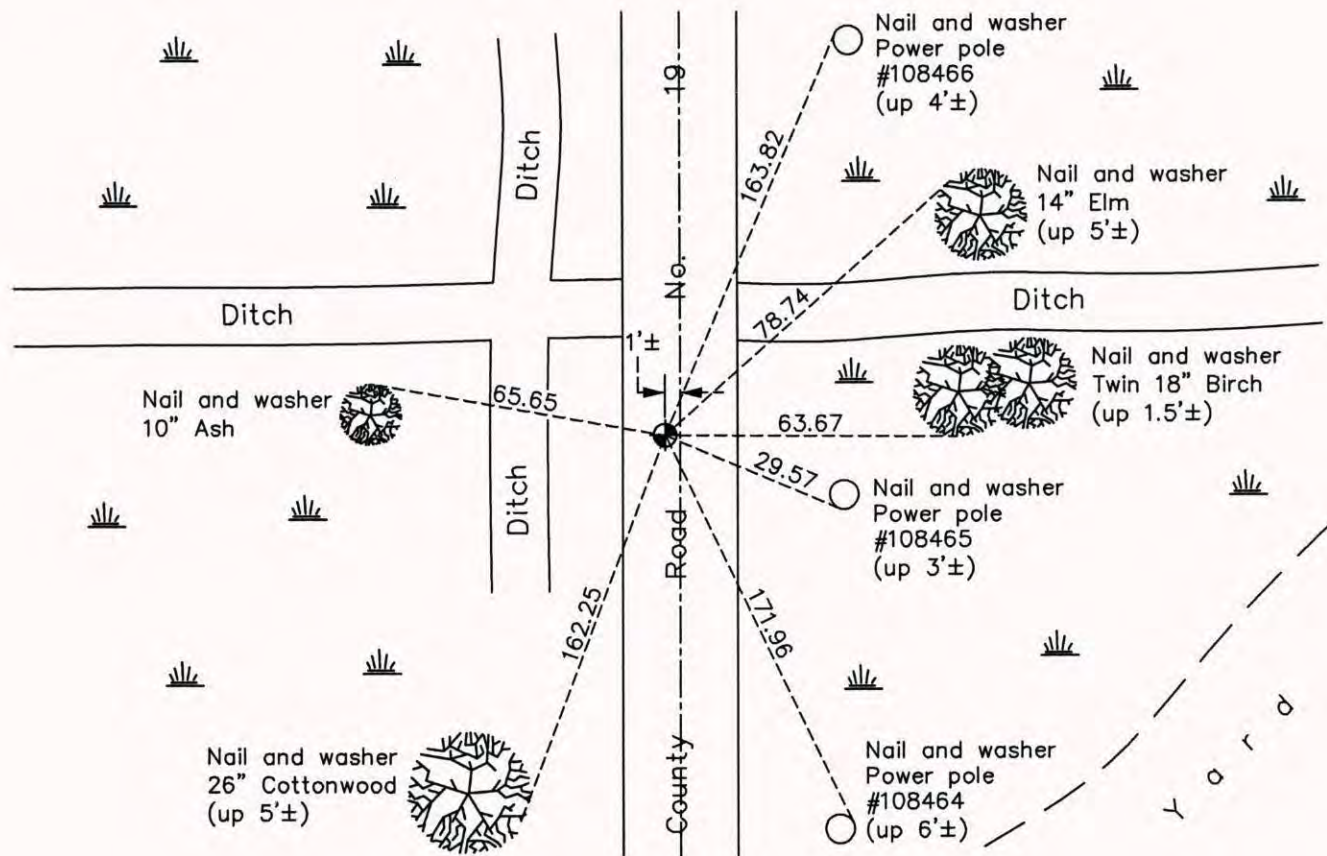
## Northwest Corner of Sec. 10 Township 32 Range 22

On the 5th day of April, 1978, the described corner was evidenced by an iron pipe

and to perpetuate the location of said corner, at the exact location thereof, a permanent marker was placed consisting of a cast iron monument

AND on the 19th day of September, 2014, said permanent marker was found and the ties were updated.

Updated reference ties are as shown below.



ANOKA COUNTY SURVEYOR

Revision Date

5/11/15

N.A.D. 1983 Coordinates  
(1996 Adjustment)

County Project Coordinates	
Northing	190460.4077
Easting	547921.6560
Date	6/23/03

I hereby certify that this United States public land survey monument record is correct and complete to the best of my knowledge and belief.

Date 5/11/15

Larry D. Hoium, Anoka County Surveyor  
 Minnesota License Number 18165