

CERTIFICATE OF LOCATION OF GOVERNMENT CORNER

County of Anoka

State of Minnesota

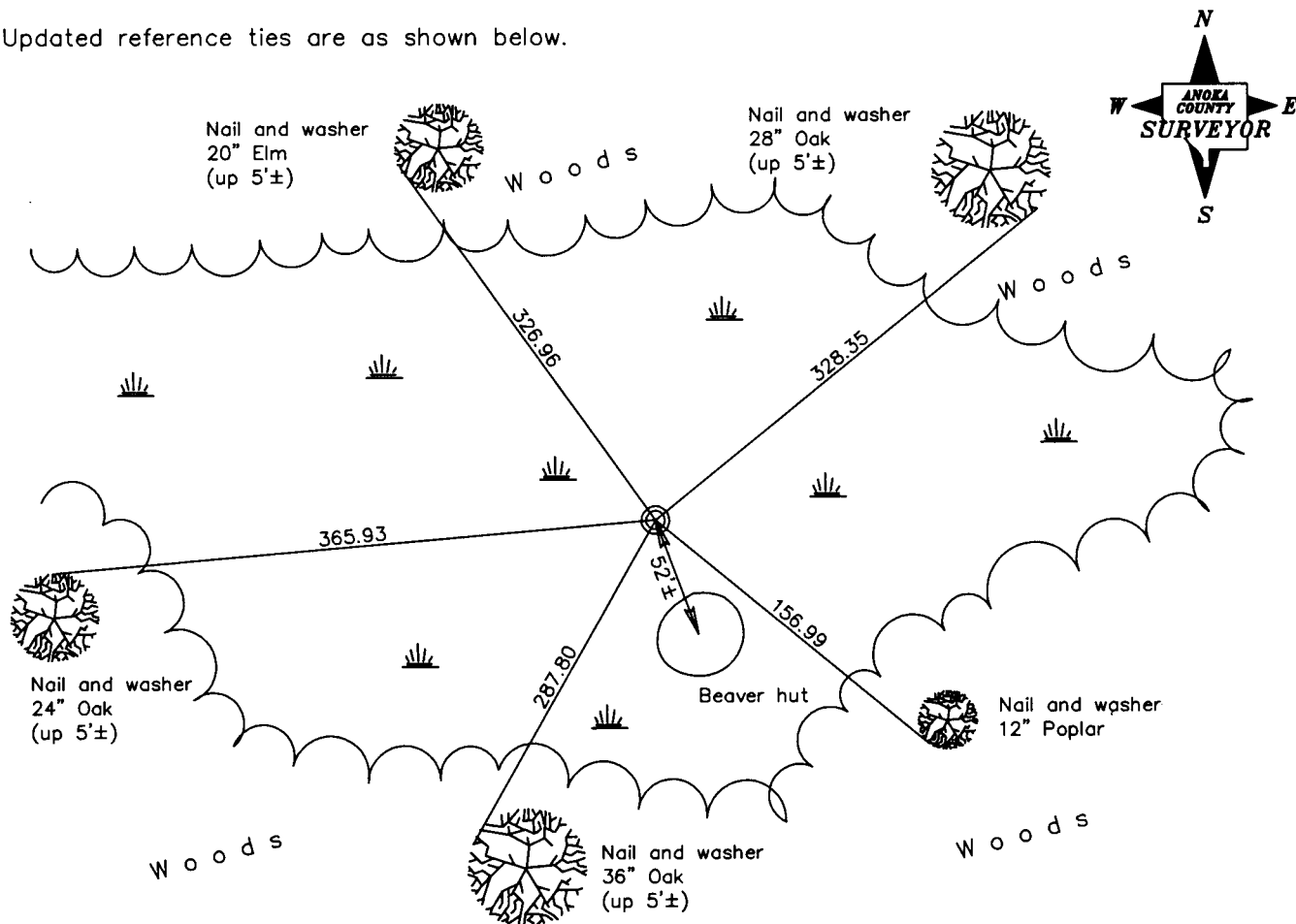
Northwest Corner of Sec. 8 Township 32 Range 22

On the 22nd day of February, 1977, the described corner was evidenced by area resurvey

and to perpetuate the location of said corner, at the exact location thereof, a permanent marker was placed consisting of a red and white iron pipe

AND on the 21st day of February, 2008, said permanent marker was found broken. The position was verified and the ties were updated.

Updated reference ties are as shown below.



Revised date

8/17/95
2/21/08

N.A.D. 1983 Coordinates
(1996 Adjustment)

County Project Coordinates
Northing <u>190451.4352</u>
Easting <u>537367.3228</u>
Date <u>2/21/08</u>

I hereby certify that this United States public land survey monument record is correct and complete to the best of my knowledge and belief.

Larry D. Hoium Date 2/21/08

Larry D. Hoium, Anoka County Surveyor

Minnesota License Number 18165