

# CERTIFICATE OF LOCATION OF GOVERNMENT CORNER

County of Anoka

State of Minnesota

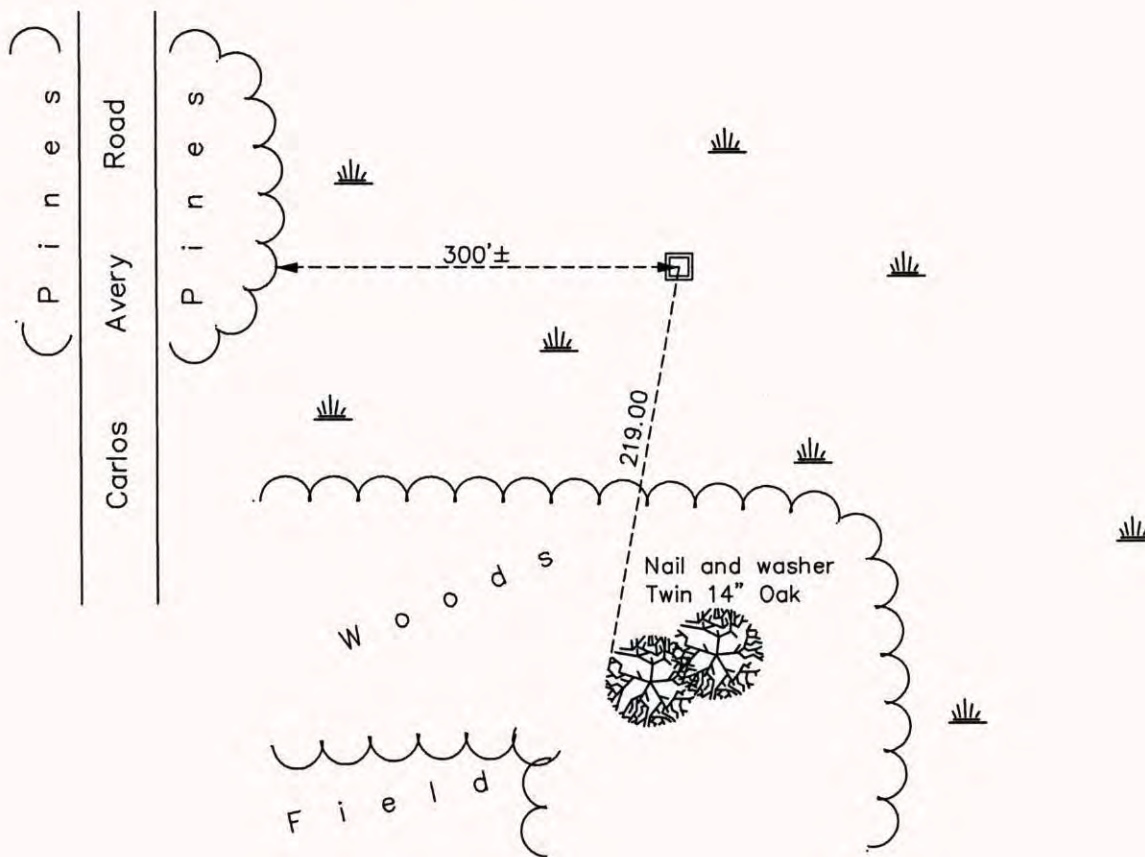
## West 1/4 Corner of Sec. 8 Township 32 Range 22

On the 25th day of February, 1980, the described corner was evidenced by area resurvey

and to perpetuate the location of said corner, at the exact location thereof, a permanent marker was placed consisting of a red and white 2" square steel Telspar monument up 1.5'± with a  
sign attached

AND on the 3rd day of December, 2014, said permanent marker was found and the  
coordinates were verified using VRS GPS methods.

Updated reference ties are as shown below.



Revision Date

5/12/15

N.A.D. 1983 Coordinates  
(1996 Adjustment)

County Project Coordinates

Northing 187818.0268

Easting 537383.7012

Date 2/02/06

I hereby certify that this United States public land survey monument record is correct and complete to the best of my knowledge and belief.

*Larry D. Hoium* Date 5/12/15

Larry D. Hoium, Anoka County Surveyor

Minnesota License Number 18165