

# CERTIFICATE OF LOCATION OF GOVERNMENT CORNER

County of Anoka

State of Minnesota

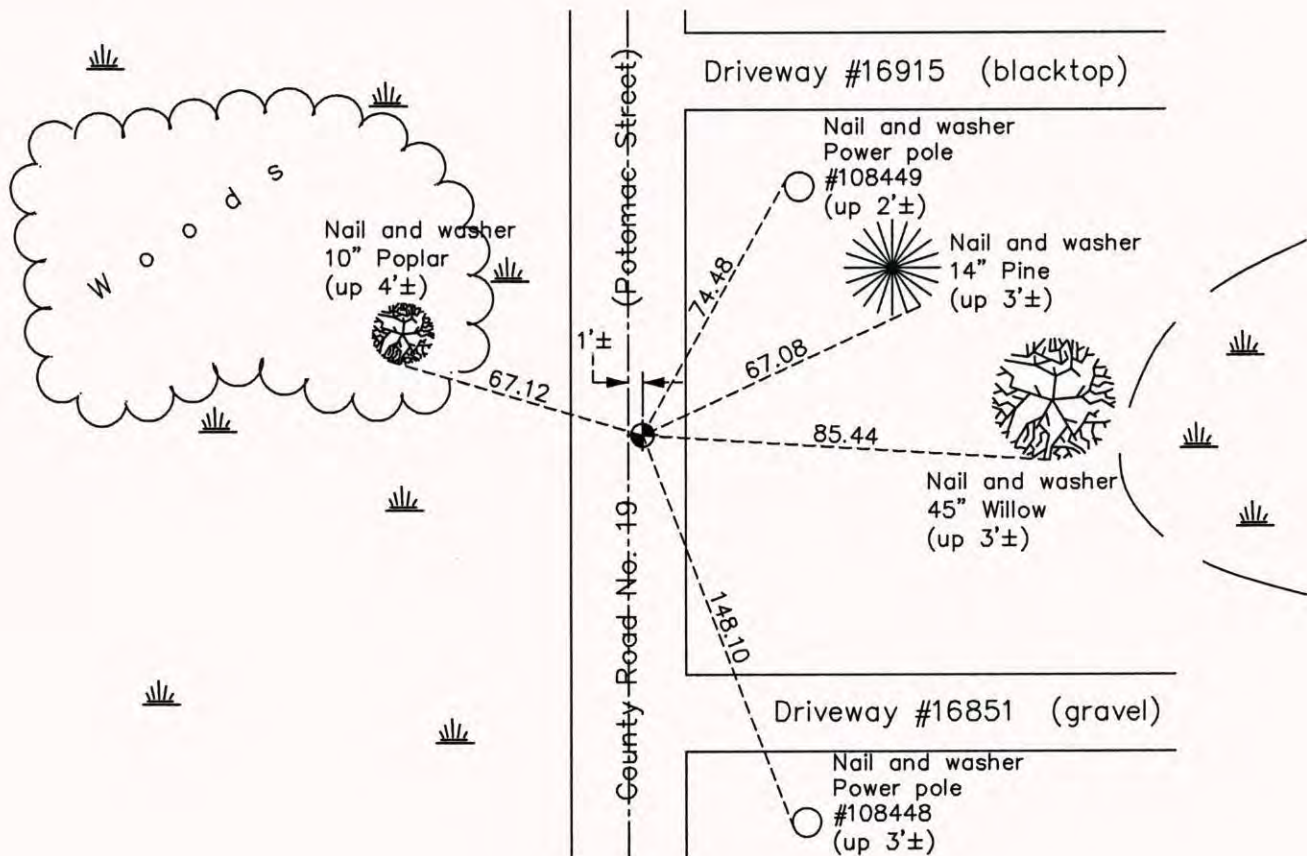
## East 1/4 Corner of Sec. 9 Township 32 Range 22

On the 18th day of September, 1964, the described corner was evidenced by a 1/2" iron pipe

and to perpetuate the location of said corner, at the exact location thereof, a permanent marker was placed consisting of a cast iron monument

AND on the 26th day of September, 2014, said permanent marker was found and the ties were updated

Updated reference ties are as shown below.



N

ANOKA COUNTY SURVEYOR

S

Revision Date

5/13/15

N.A.D. 1983 Coordinates (1996 Adjustment)	
County Project Coordinates	
Northing	187836.1133
Easting	547954.7386
Date	6/23/03

I hereby certify that this United States public land survey monument record is correct and complete to the best of my knowledge and belief.

*Larry D. Hoium* Date 5/13/15

Larry D. Hoium, Anoka County Surveyor

Minnesota License Number 18165