

CERTIFICATE OF LOCATION OF GOVERNMENT CORNER

County of Anoka

State of Minnesota

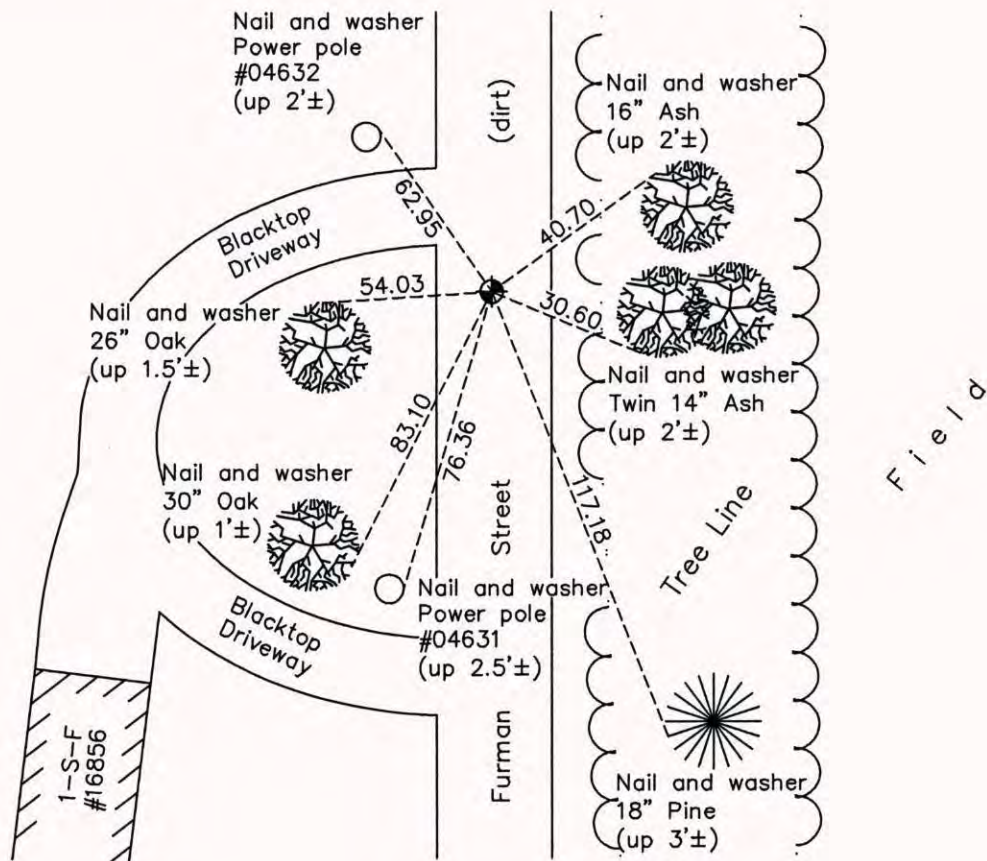
East 1/4 Corner of Sec. 10 Township 32 Range 22

On the 5th day of April, 1978, the described corner was evidenced by an iron pipe

and to perpetuate the location of said corner, at the exact location thereof, a permanent marker was placed consisting of a cast iron monument

AND on the 16th day of September, 2014, said permanent marker was found down 1.5'± and the ties were updated

Updated reference ties are as shown below.



N
W ANOKA COUNTY SURVEYOR E
S

Revision Date
5/14/15

N.A.D. 1983 Coordinates
(1996 Adjustment)

County Project Coordinates	
Northing	187808.0381
Easting	553153.9637
Date	6/18/03

I hereby certify that this United States public land survey monument record is correct and complete to the best of my knowledge and belief.

Larry D. Hoium Date 5/14/15

Larry D. Hoium, Anoka County Surveyor
Minnesota License Number 18165