

CERTIFICATE OF LOCATION OF GOVERNMENT CORNER

County of Anoka

State of Minnesota

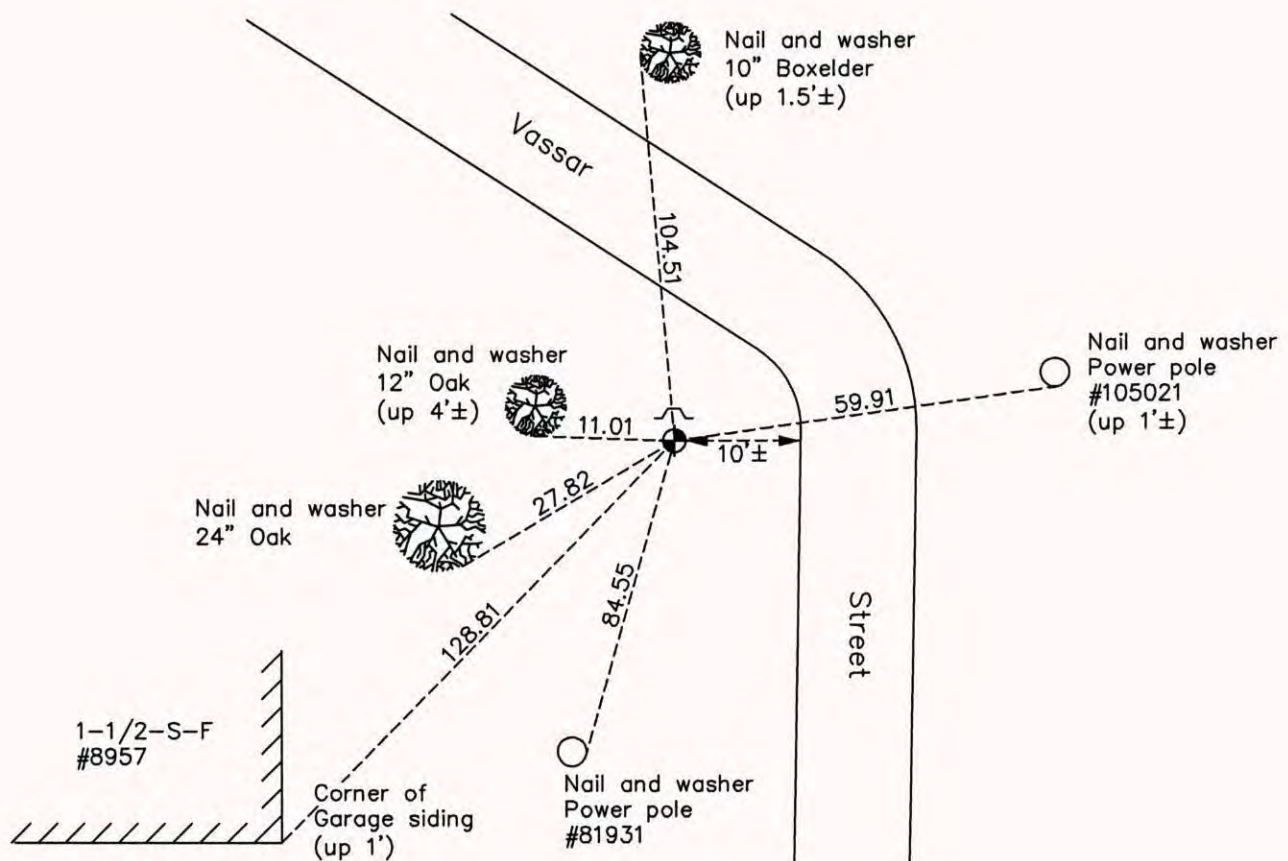
West 1/4 Corner of Sec. 12 Township 32 Range 22

On the 6th day of June, 1969, the described corner was evidenced by area resurvey

and to perpetuate the location of said corner, at the exact location thereof, a permanent marker was placed consisting of a cast iron monument with a sign and post on the north side

AND on the 23rd day of September, 2014, said permanent marker was found down 1'± and the ties were updated. Monument is 1.5'± south of sign and post.

Updated reference ties are as shown below.



N
W ANOKA COUNTY SURVEYOR E
S

Revision Date 5/14/15

N.A.D. 1983 Coordinates
(1996 Adjustment)

County Project Coordinates	
Northing	187769.7574
Easting	558385.2710
Date	6/25/03

I hereby certify that this United States public land survey monument record is correct and complete to the best of my knowledge and belief.

Larry D. Hoium Date 5/14/15

Larry D. Hoium, Anoka County Surveyor
Minnesota License Number 18165