

CERTIFICATE OF LOCATION OF GOVERNMENT CORNER

County of Anoka

State of Minnesota

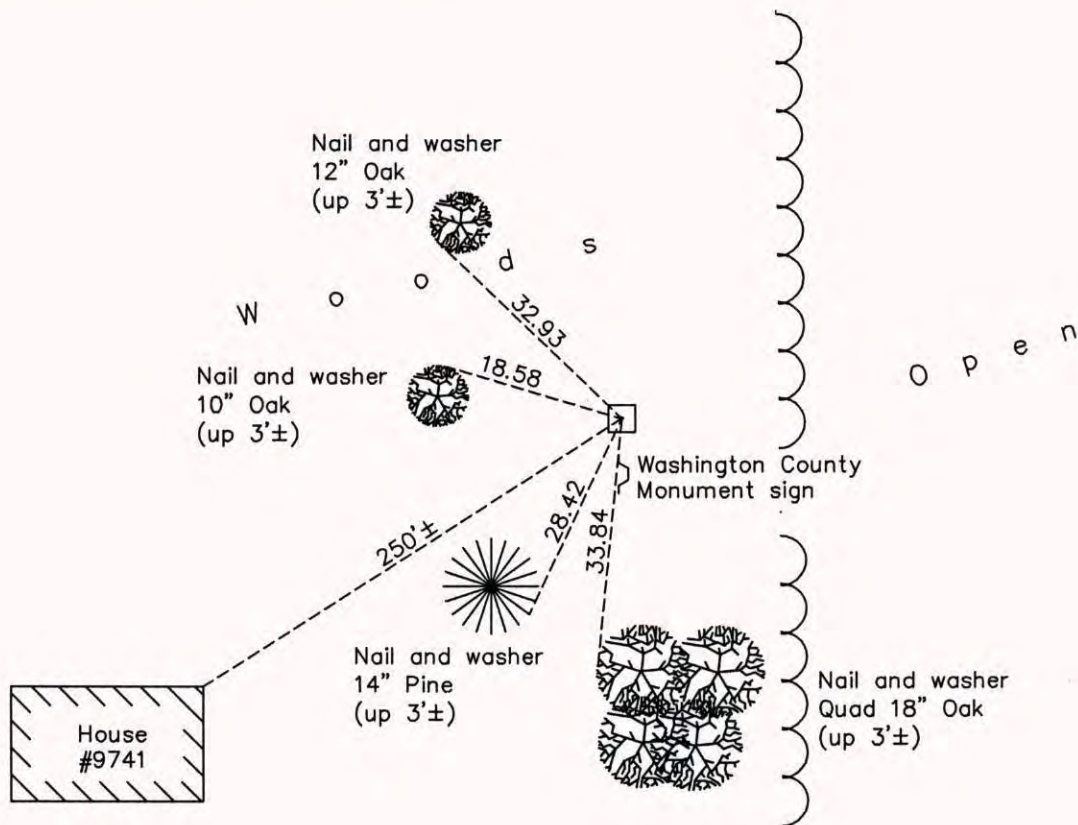
East 1/4 Corner of Sec. 12 Township 32 Range 22

On the 27th day of July, 1960, the described corner was evidenced by a sandstone monument

and to perpetuate the location of said corner, at the exact location thereof, a permanent marker was placed consisting of the same sandstone monument

AND on the 23rd day of September, 2014, said permanent marker was found up 0.2'± and the ties were updated

Updated reference ties are as shown below.



N.A.D. 1983 Coordinates
(1996 Adjustment)

County Project Coordinates

Northing	187730.0753
Easting	563626.5223
Date	1/17/06

Revision Date
5/15/15

I hereby certify that this United States public land survey monument record is correct and complete to the best of my knowledge and belief.

Larry D. Hoium Date 5/15/15

Larry D. Hoium, Anoka County Surveyor

Minnesota License Number 18165