

CERTIFICATE OF LOCATION OF GOVERNMENT CORNER

County of Anoka

State of Minnesota

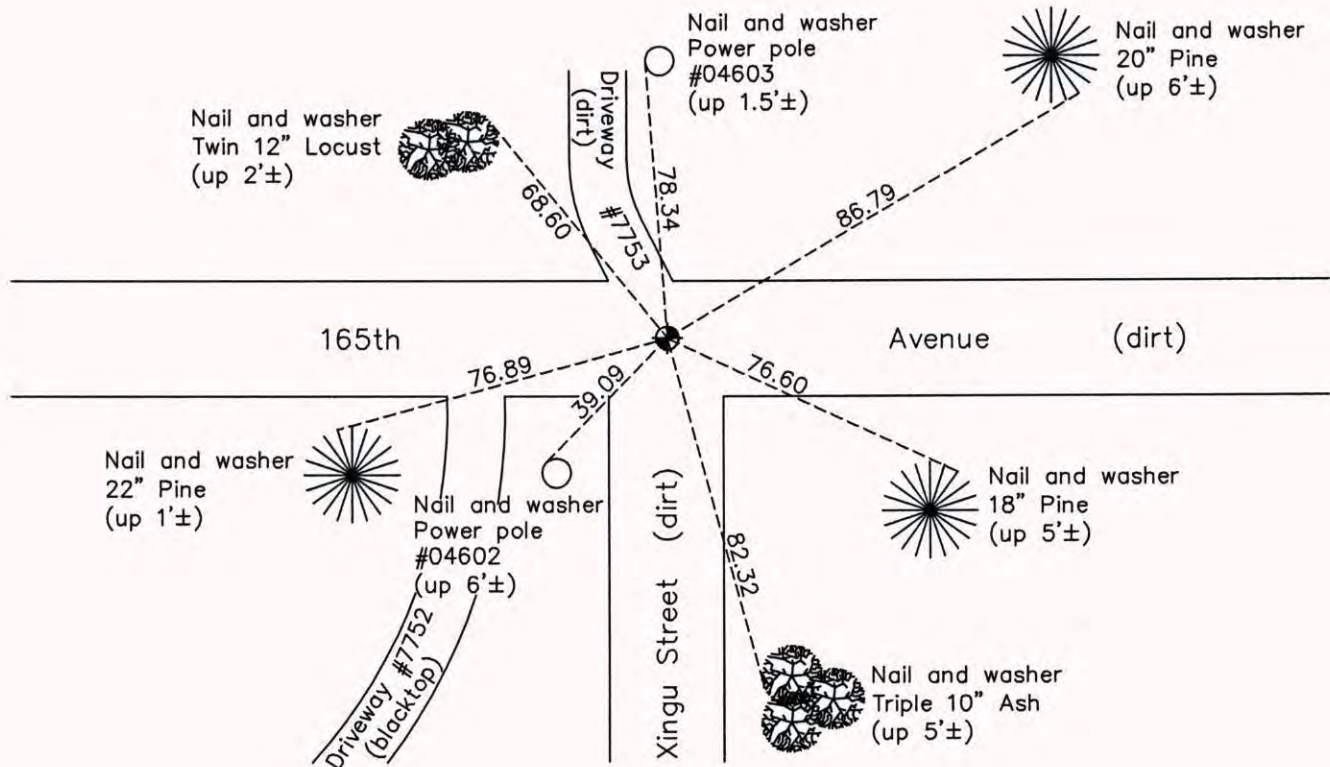
North $\frac{1}{4}$ Corner of Sec. 15 Township 32 Range 22

On the 13th day of May, 1963, the described corner was evidenced by a well point

and to perpetuate the location of said corner, at the exact location thereof, a permanent marker was placed consisting of a cast iron monument down 0.5'±

AND on the 11th day of September, 2014, said permanent marker was found down 2'± and the ties were updated

Updated reference ties are as shown below.



N
W ANOKA COUNTY SURVEYOR E
S

Revision Date
5/26/15

N.A.D. 1983 Coordinates
(1996 Adjustment)

| County Project Coordinates | |
|----------------------------|-------------|
| Northing | 185201.6397 |
| Easting | 550575.4584 |
| Date | 6/23/03 |

I hereby certify that this United States public land survey monument record is correct and complete to the best of my knowledge and belief.

Larry D. Hoium Date 5/26/15

Larry D. Hoium, Anoka County Surveyor
Minnesota License Number 18165