

CERTIFICATE OF LOCATION OF GOVERNMENT CORNER

County of Anoka

State of Minnesota

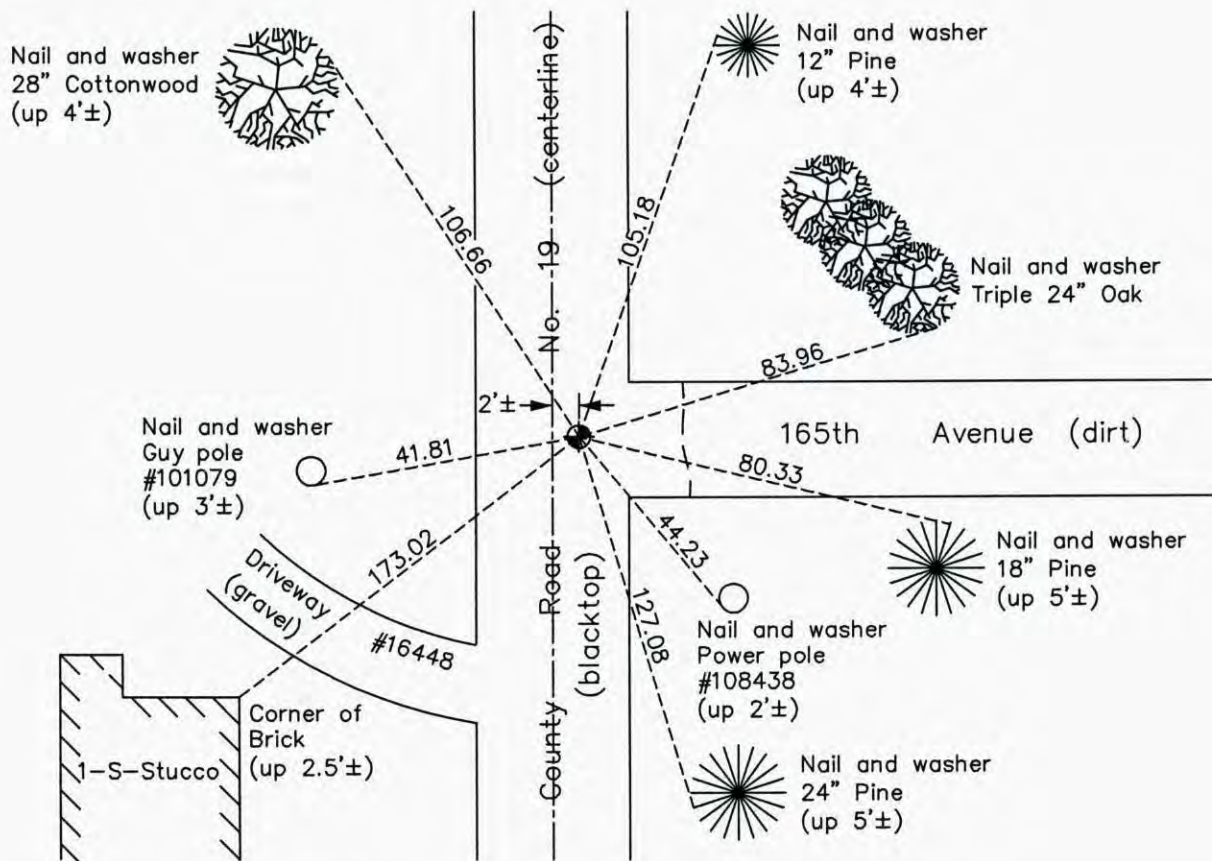
Southeast Corner of Sec. 9 Township 32 Range 22

On the 18th day of September, 1964, the described corner was evidenced by a solid iron bar

and to perpetuate the location of said corner, at the exact location thereof, a permanent marker was placed consisting of a cast iron monument

AND on the 26th day of September, 2014, said permanent marker was found and the ties were updated

Updated reference ties are as shown below.



N.A.D. 1983 Coordinates
(1996 Adjustment)

County Project Coordinates

Northing	185222.9519
Easting	547963.5435
Date	6/23/03

Revision Date
5/26/15

I hereby certify that this United States public land survey monument record is correct and complete to the best of my knowledge and belief.

Date 5/26/15
 Larry D. Hoium, Anoka County Surveyor
 Minnesota License Number 18165