

# CERTIFICATE OF LOCATION OF GOVERNMENT CORNER

County of Anoka

State of Minnesota

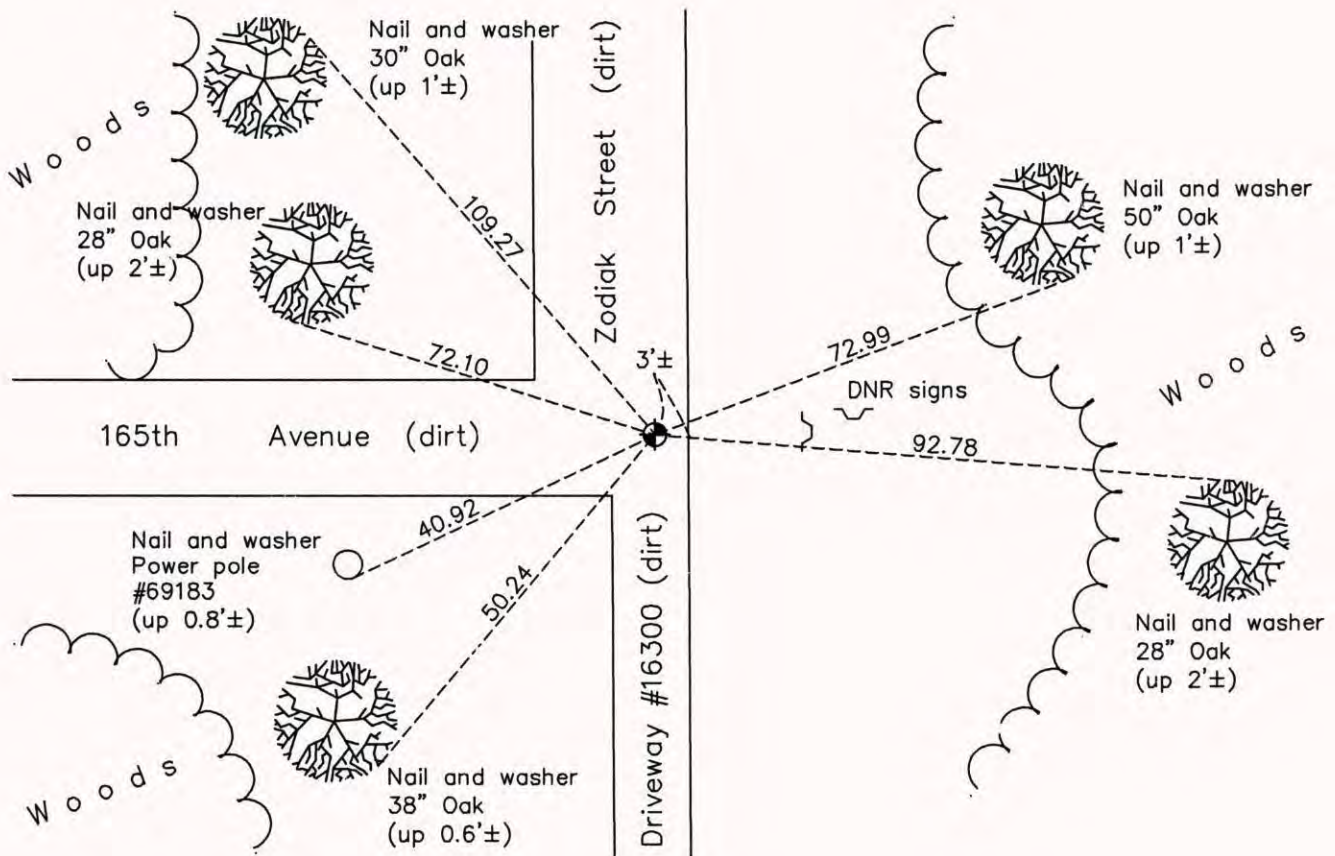
## Northwest Corner of Sec. 16 Township 32 Range 22

On the 6th day of December, 1963, the described corner was evidenced by a 4" X 5" concrete monument

and to perpetuate the location of said corner, at the exact location thereof, a permanent marker was placed consisting of a cast iron monument

AND on the 11th day of September, 2014, said permanent marker was found down 0.5'± and the ties were updated

Updated reference ties are as shown below.



N  
ANOKA COUNTY SURVEYOR  
 W                      E  
 S

Revision Date  
6/02/15

N.A.D. 1983 Coordinates  
(1996 Adjustment)

County Project Coordinates	
Northing	<u>185203.9335</u>
Easting	<u>542742.7546</u>
Date	<u>6/24/03</u>

I hereby certify that this United States public land survey monument record is correct and complete to the best of my knowledge and belief.

*Larry D. Hoium*      Date 6/02/15

Larry D. Hoium, Anoka County Surveyor  
 Minnesota License Number 18165