

CERTIFICATE OF LOCATION OF GOVERNMENT CORNER

County of Anoka

State of Minnesota

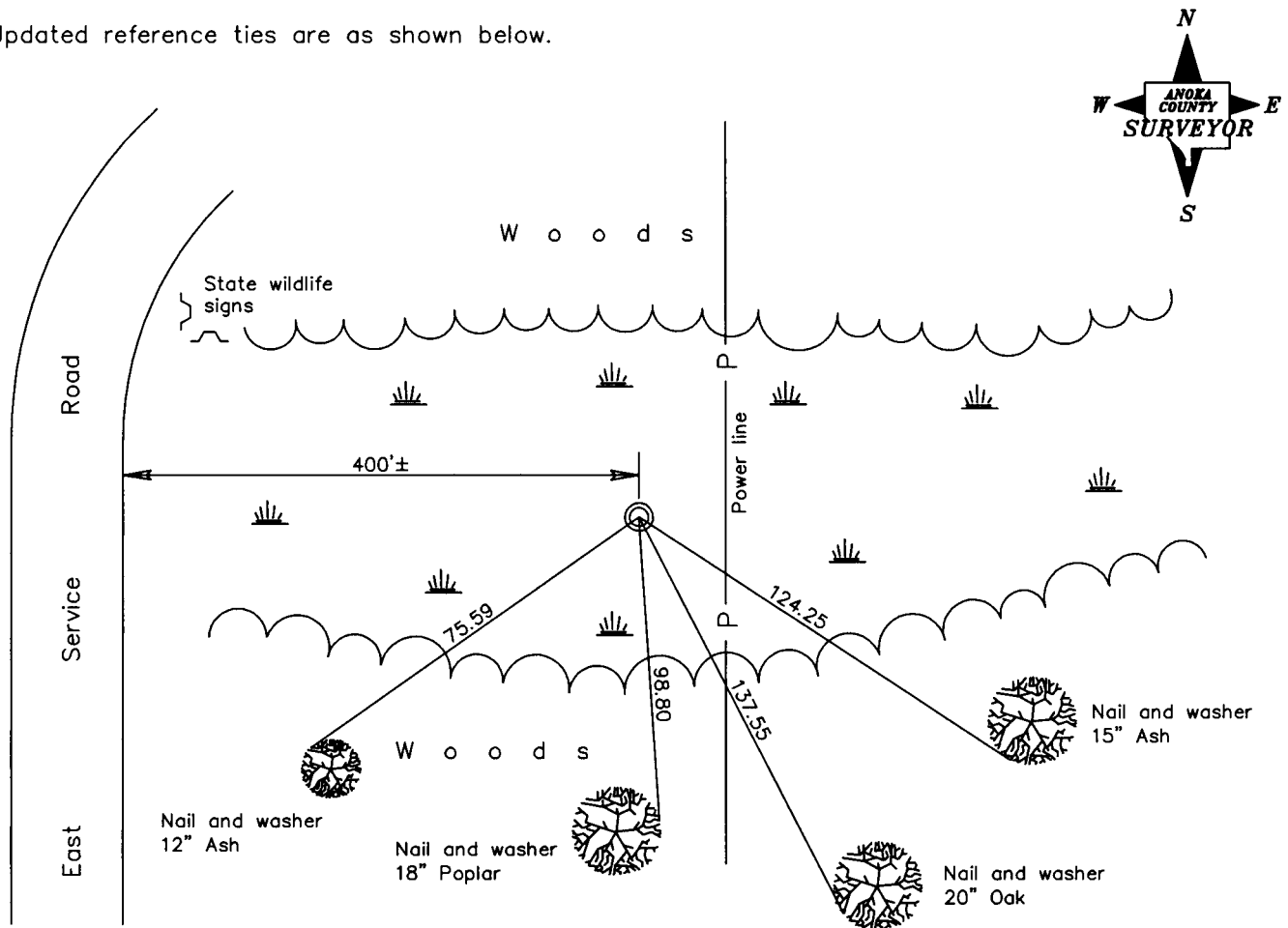
Southeast Corner of Sec. 13 Township 32 Range 22

On the 12th day of February, 1979, the described corner was evidenced by reties

and to perpetuate the location of said corner, at the exact location thereof, a permanent marker was placed consisting of a red and white iron pipe

AND on the 17th day of January, 2006, said permanent marker was found and the ties were updated

Updated reference ties are as shown below.



Revised date

6/13/90
8/21/95
1/17/06

N.A.D. 1983 Coordinates
(1996 Adjustment)

County Project Coordinates
Northing <u>179880.5946</u>
Easting <u>563657.3255</u>
Date <u>1/17/06</u>

I hereby certify that this United States public land survey monument record is correct and complete to the best of my knowledge and belief.

Larry D. Hoium Date 1/17/06
 _____, Anoka County Surveyor
 Minnesota License Number 18165