

# CERTIFICATE OF LOCATION OF GOVERNMENT CORNER

County of Anoka

State of Minnesota

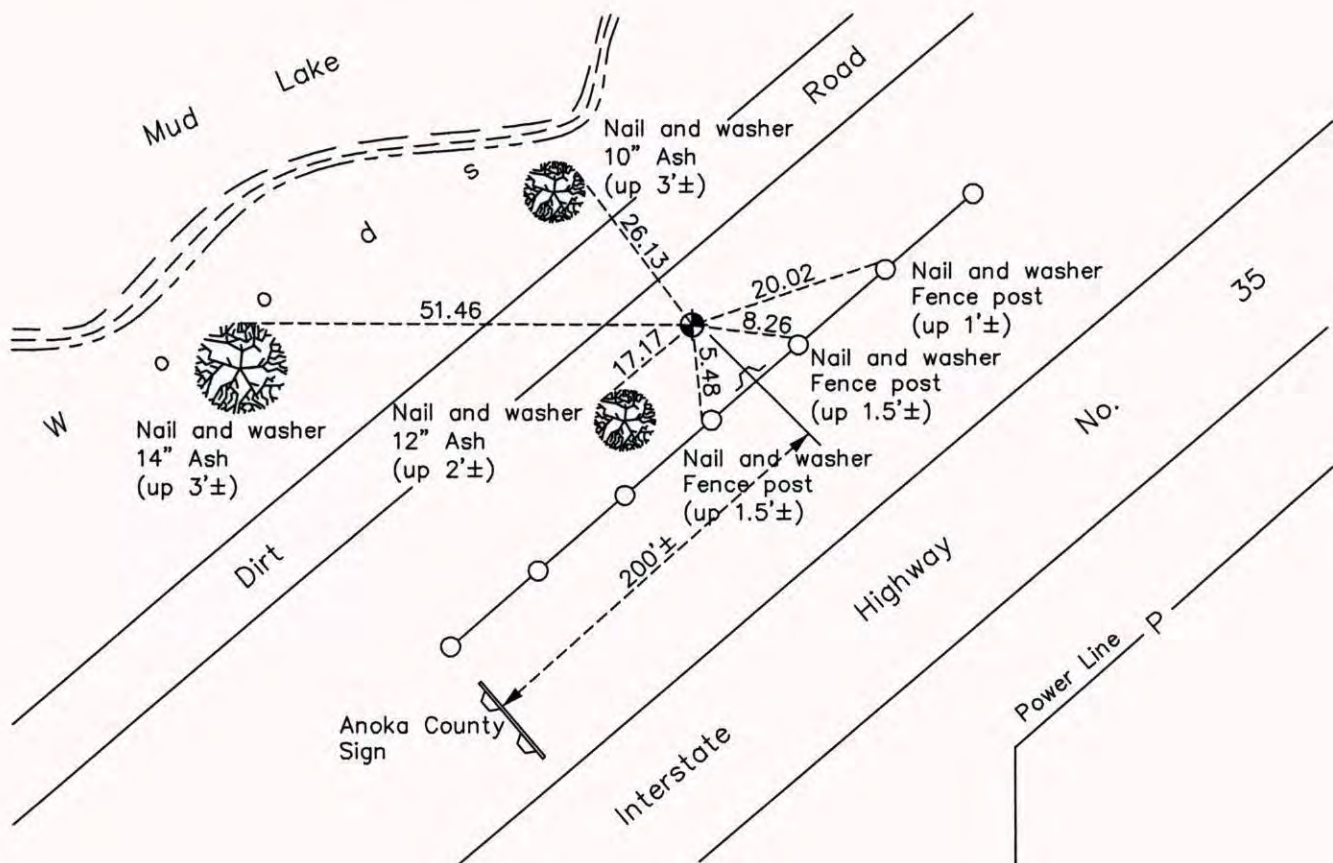
Witness Corner of Sec. 13 Township 32 Range 22  
 (on east line of section)

On the 12th day of February, 1979, the described corner was evidenced by area resurvey

and to perpetuate the location of said corner, at the exact location thereof, a permanent marker was placed consisting of a cast iron monument with a sign and post 5' south on right-of-way fence

AND on the 25th day of September, 2014, said permanent marker was found down 0.5'± with sign and post missing. Set new sign and post 2'± SE of monument along fence line. Updated ties.

Updated reference ties are as shown below.



Revision Date  
6/16/15

N.A.D. 1983 Coordinates  
 (1996 Adjustment)

County Project Coordinates	
Northing	181465.1975
Easting	563647.6397
Date	7/01/03

I hereby certify that this United States public land survey monument record is correct and complete to the best of my knowledge and belief.

*Larry D. Hoium* Date 6/16/15

Larry D. Hoium, Anoka County Surveyor  
 Minnesota License Number 18165