

# CERTIFICATE OF LOCATION OF GOVERNMENT CORNER

County of Anoka

State of Minnesota

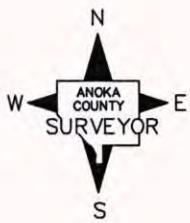
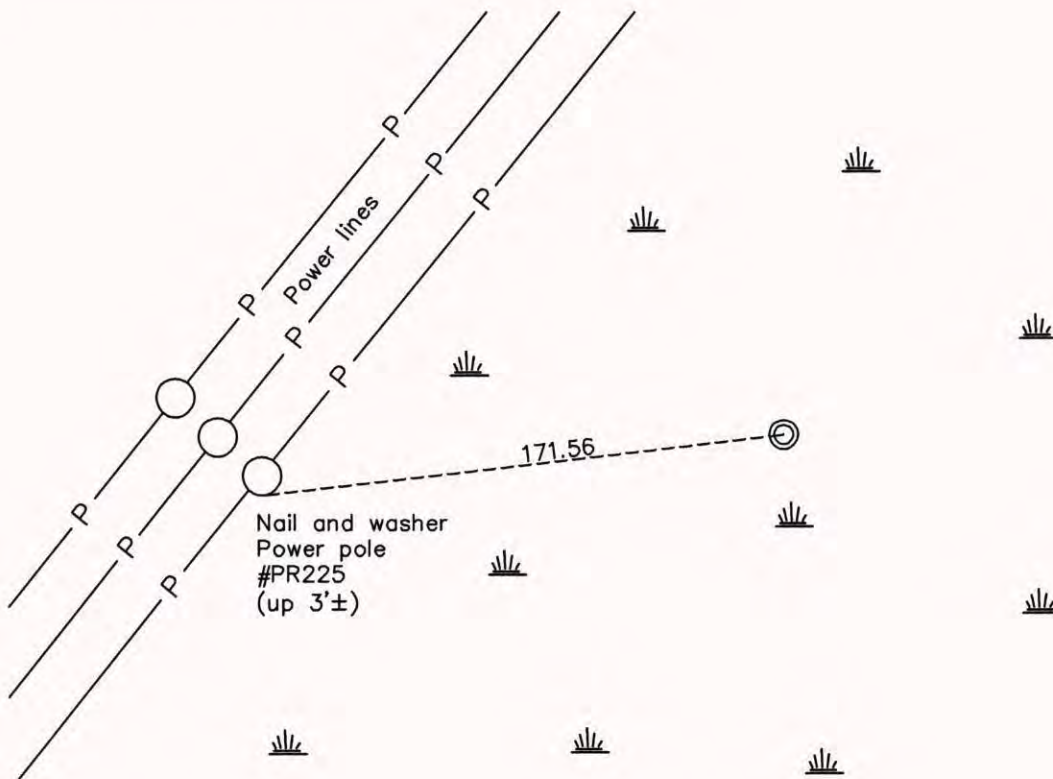
## North 1/4 Corner of Sec. 24 Township 32 Range 22

On the 25th day of April, 1966, the described corner was evidenced by a 2" iron pipe

and to perpetuate the location of said corner, at the exact location thereof, a permanent marker was placed consisting of the same 2" iron pipe up 1.5'± with a steel post on the north side

AND on the 4th day of March, 2015, said permanent marker was found with the steel post missing and the ties were updated

Updated reference ties are as shown below.



Revision Date  
6/16/15

N.A.D. 1983 Coordinates  
 (1996 Adjustment)

County Project Coordinates	
Northing	<u>179864.0428</u>
Easting	<u>561053.0199</u>
Date	<u>1/18/06</u>

I hereby certify that this United States public land survey monument record is correct and complete to the best of my knowledge and belief.

*Larry D. Hoium* Date 6/16/15

Larry D. Hoium, Anoka County Surveyor  
 Minnesota License Number 18165