

CERTIFICATE OF LOCATION OF GOVERNMENT CORNER

County of Anoka

State of Minnesota

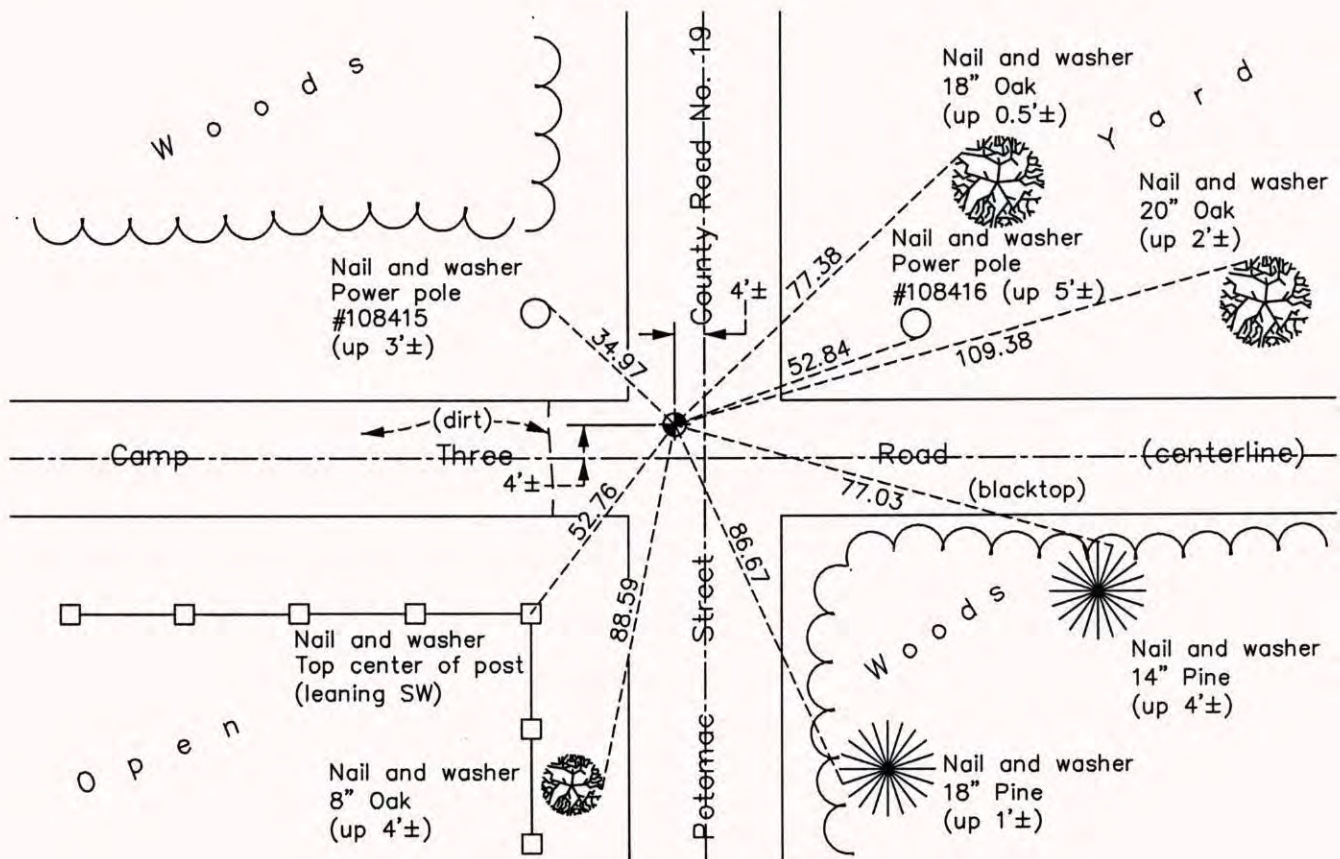
Southwest Corner of Sec. 15 Township 32 Range 22

On the 13th day of August, 1964, the described corner was evidenced by an iron pipe

and to perpetuate the location of said corner, at the exact location thereof, a permanent marker was placed consisting of a cast iron monument

AND on the 26th day of September, 2014, said permanent marker was found and the ties were updated

Updated reference ties are as shown below.



N
ANOKA COUNTY SURVEYOR
 E
 S

Revision Date
6/23/15

N.A.D. 1983 Coordinates
(1996 Adjustment)

County Project Coordinates	
Northing	179979.3955
Easting	547881.0832
Date	6/17/03

I hereby certify that this United States public land survey monument record is correct and complete to the best of my knowledge and belief.

Larry D. Hoium Date 6/23/15

Larry D. Hoium, Anoka County Surveyor
 Minnesota License Number 18165