

CERTIFICATE OF LOCATION OF GOVERNMENT CORNER

County of Anoka

State of Minnesota

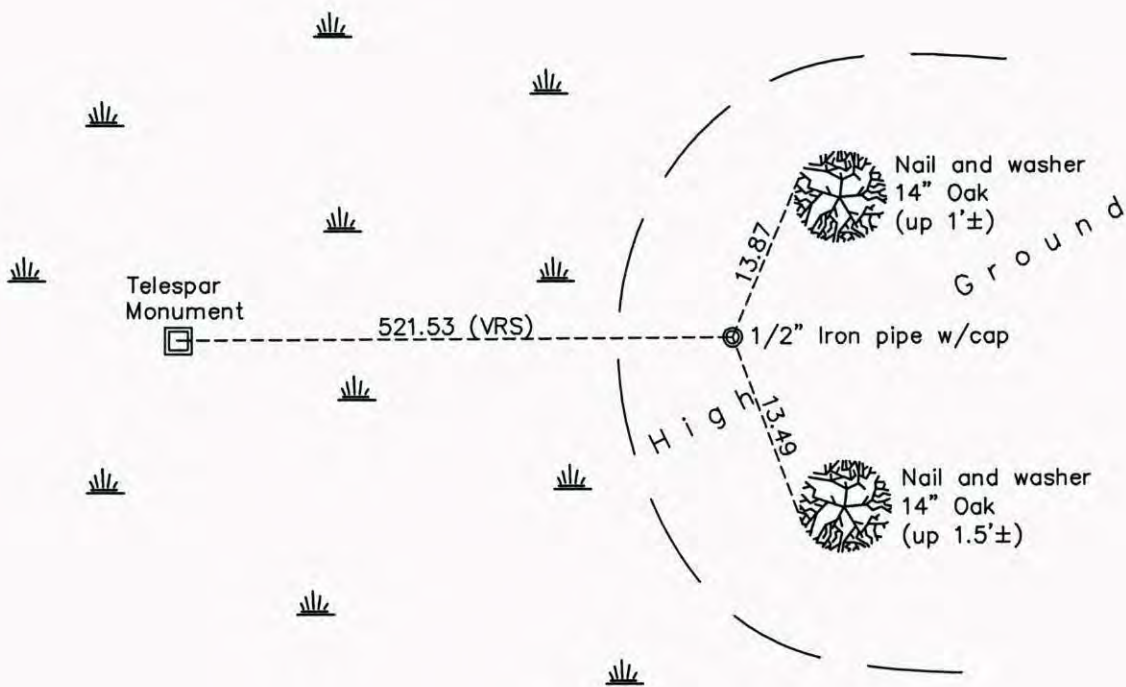
North 1/4 Corner of Sec. 20 Township 32 Range 22

On the 10th day of June, 1943, the described corner was evidenced by a 1" iron pipe set by the MN DNR

and to perpetuate the location of said corner, at the exact location thereof, a permanent marker was placed consisting of a 2" square steel Telespar monument

AND on the 6th day of March, 2015, said permanent marker was found up 2'± and the ties were updated

Updated reference ties are as shown below.



Revision Date
 6/24/15

N.A.D. 1983 Coordinates
 (1996 Adjustment)

County Project Coordinates	
Northing	179979.2946
Easting	540054.0599
Date	4/02/03

I hereby certify that this United States public land survey monument record is correct and complete to the best of my knowledge and belief.

Larry D. Hoium Date 6/24/15

Larry D. Hoium, Anoka County Surveyor
 Minnesota License Number 18165